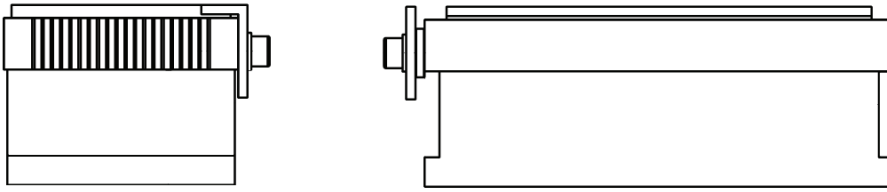


WORKHOLDING CHUCKS FOR GRINDING & MILLING

PERMANENT MAGNETIC CHUCK - GRINDING

Walker's permanent magnetic chucks are manually operated. Made with powerful permanent rare earth (NEO) magnet materials, these chucks can hold a wide range of work-pieces without transferring heat into the material. These chucks allows for holding work-pieces during both surface grinding, as well as light milling. EDM is also possible.



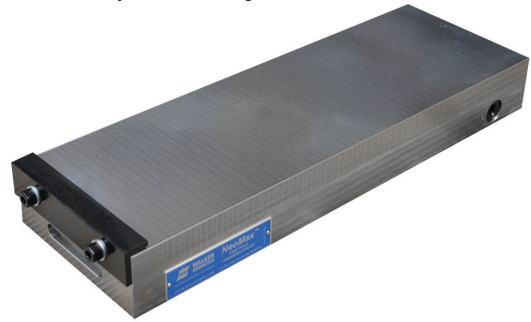
NEOMAX™ PERMANENT MAGNETIC CHUCK - GRINDING

The NeoMax™ chuck is a high powered, rare earth permanent magnetic chuck. This model is an extremely versatile magnetic chuck that can be used for grinding, sinker edm and light milling applications.

FEATURES:

Solid steel/Stainless steel fine pole top plate

- » Steel body milled on all sides
- » Powerful Neodymium magnet material
- » One backrest and one end stop for use on two adjacent sides are included with hardware
- » Allen key for actuation and 2 clamps included
- » Uniform holding power



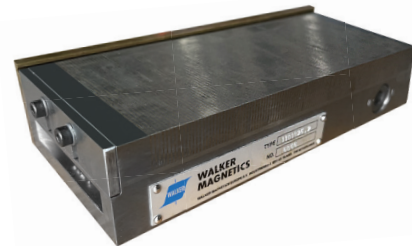
Face Size (in) AxB	Face Ht. (in) C	Overall Wd. (in) D	Overall Lg. (in) E	Weight (lbs)	Model No.
6x12	2.79	5.9	11.81	57	CP0612C2
6x18	2.79	5.9	17.71	86	CP0618C2
8x18	2.79	7.87	17.71	114	CP0818C2
10x15	2.95	9.84	14.96	125	CP1015C2
12x18	2.95	11.81	17.71	172	CP1218C2
12x24	2.95	11.81	23.26	237	CP1224C2

NEOMICRO PERMANENT MAGNETIC CHUCK - PRECISION GRINDING

The NEOMICRO (Micropitch) Permanent Magnetic Chucks offer superior holding and positioning accuracy for precision grinding applications. Designed to reliably hold a large range of work-piece sizes, from very small and thin up to large items.

FEATURES:

- » Unique actuating mechanism eliminates switching deformation
- » Uniform magnet force distribution over entire working area
- » Specially designed magnetic circuit generates 30% higher holding force compared to other micropitch chucks
- » Very low residual magnetic field allowing for easy removal of grinding swarf
- » Low height allowing maximum wheelhead clearance and ability to use the Neomicro on top of another chuck
- » Backrest and end stop on two adjacent sides
- » Allen key for actuation and 2 clamps included



Face Size (in) AxB	Face Ht. (in) C	Overall Wd. (in) D	Overall Lg. (in) E	Pole Width (in) I	Brass Width (in) J	Weight (lbs)	Model No.
4x10	1.9"	3.93	9.84	0.055	0.02	22	CP0410MICRO
5x10	1.9"	5.11	9.84	0.055	0.02	29	CP0510MICRO
6x10	2.0"	5.9	9.84	0.055	0.02	33	CP0610MICRO
6x12	2.0"	5.9	11.81	0.055	0.02	39.6	CP0612MICRO
6x14	2.0"	5.9	13.77	0.055	0.02	48.4	CP0614MICRO
6x17.74	2.0"	5.9	17.71	0.055	0.02	61.6	CP0618MICRO
8x17.74	2.0"	7.87	17.71	0.055	0.02	81.4	CP0818MICRO
8x24	2.2"	7.87	23.62	0.055	0.02	107.8	CP0824MICRO