

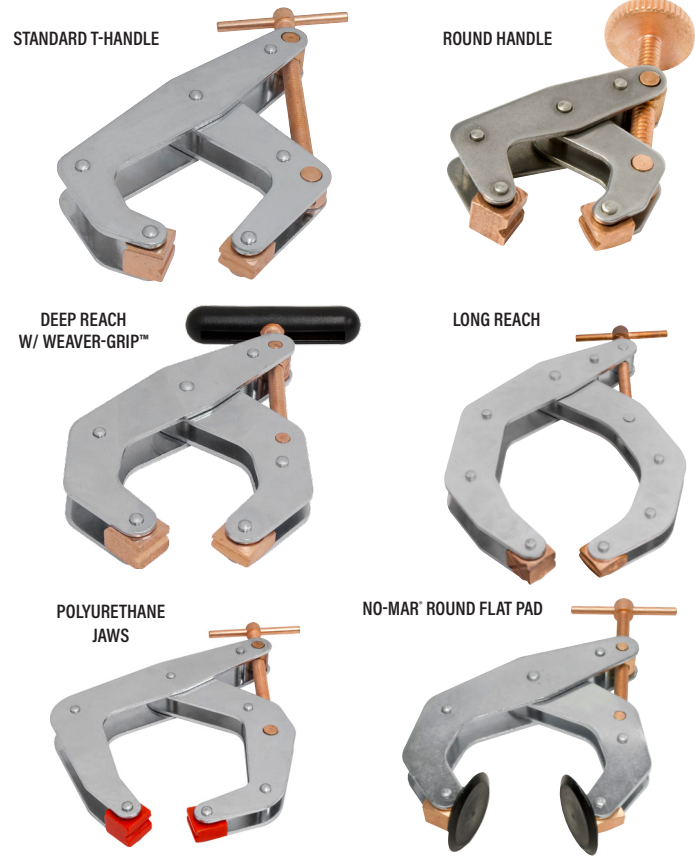
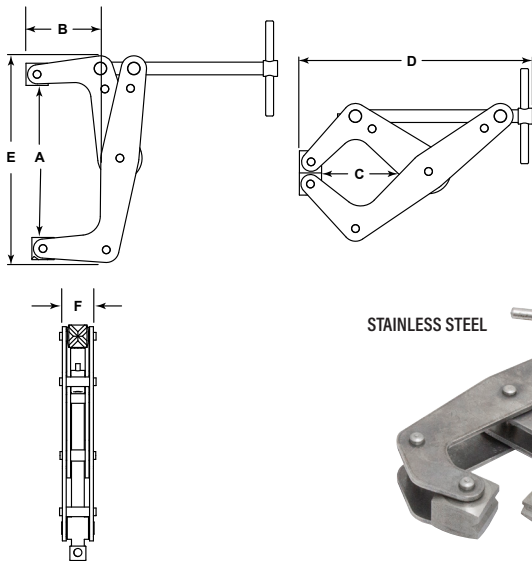


KANT-TWIST® CANTILEVER CLAMPS



FEATURES:

- Will not "walk-off-center"
- Eliminates distorting and twisting action of C-clamps
- Cantilever design provides 4:1 clamp ratio
- Three different gripping surfaces
- Built-in "V" block for round stock
- Free floating jaws adjust to uneven surfaces
- Copper plated jaws, screw and handle are ideal for welding



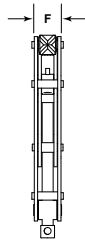
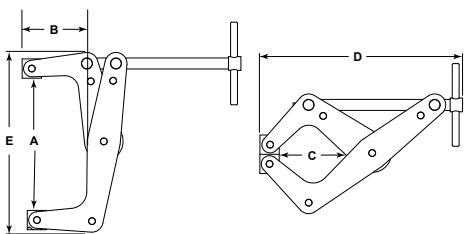
Jaw Capacity A (in)	Throat Depth Open B (in)	Throat Depth Closed C (in)	Overall Length D (in)	Width Open E (in)	Thickness F (in)	Max Clamp Force (lbs)	Handle Diameter & Length (in)	Handle Dia & Length w/Weaver-Grip™ (in)	Weight (lbs)	Model No.	Model No. With Weaver-Grip™
Round Handle. Ideal for "fine tuning" clamping force											
3/4	3/8	3/8	1-3/4	1-3/8	7/16	200	5/8	N/A	0.06	K007R	N/A
1	1/2	1/2	2-1/4	1-7/8	1/2	350	3/4	N/A	0.1	K010R	N/A
1-1/2	1	1	3-3/4	3-1/8	5/8	600	1-1/8	N/A	0.29	K015R	N/A
2	1-1/4	1-1/4	4	3-1/4	7/8	800	1-1/8	N/A	0.46	K020R	N/A
2-1/2	1-3/4	1-13/16	4-1/2	4-1/16	7/8	700	1-1/8	N/A	0.51	K025RD	N/A
Standard T-Handle											
1	1/2	1/2	2-1/8	1-7/8	1/2	350	1/8 x 1	1/2 x 1-1/2	0.09	K010T	K010TW
2	1-1/4	1-1/4	4	3-3/8	7/8	800	1/8 x 1-3/4	11/16 x 2-1/2	0.42	K020T	K020TW
3	1-3/4	1-1/2	6-1/4	5-1/4	1-1/8	1500	1/4 x 3	7/8 x 4	1.15	K030T	K030TW
9	3-3/4	4-3/4	14-1/2	13	1-5/8	2500	3/8 x 6	N/A	7.15	K090T	N/A
12	5-1/2	6-1/2	17-3/4	16	2	6000	3/8 x 6	N/A	13.9	K120T	N/A
Deep Reach - Extended Reach T-Handle. Reach farther onto material											
2-1/2	1-3/4	1-13/16	4-1/2	4-1/16	7/8	700	1/8 x 1 3/4	11/16 x 2-1/2	.51	K025TD	K025TDW
4-1/2	2-3/8	2-5/8	7-1/2	7	1-1/8	1700	1/4 x 3	7/8 x 4	1.75	K045TD	K045TDW
6	5	5	11-1/2	10	1-3/8	2000	5/16 x 3 3/4	1-1/8 x 5	3.75	K060TD	K060TDW
10	6-1/2	7	17	15	1-3/4	3500	3/8 x 6	N/A	11.35	K100TD	N/A
Stainless Steel T-Handle. Ideal for use in corrosive, sanitary or magnetic applications											
2	1-1/4	1-1/4	4	3-1/4	7/8	700	1/8 x 1-3/4	11/16 x 2-1/2	.42	K020TS	K020TSW
3	1-1/4	1-1/2	6-1/4	5-1/4	1-1/8	1200	1/4 x 3	7/8 x 4	1.14	K030TS	K030TSW
4-1/2	2-3/8	2-1/2	7-1/2	6-3/4	1-1/8	1500	1/4 x 3	7/8 x 4	1.74	K045TSD	K045TSDW
6	5	5	11-1/2	10	1-3/8	2000	5/16 x 3 3/4	1-1/8 x 5	3.75	K060TSD	K060TSDW
No-Mar® Round Flat Pad Jaw, T-Handle. Wood, plastics, aluminum or polished metals											
3/4	1/2	1/2	2-1/2	1-3/4	1/2	350	1/8 x 1	1/2 x 1-1/2	0.1	K010TP	K010TPW
1-3/4	1-1/8	1-1/4	4-1/2	3-1/4	1-3/8	800	1/8 x 1-3/4	11/16 x 2-1/2	0.46	K020TP	K020TPW
2-1/4	1-3/4	1-13/16	4-1/2	4-1/16	1-3/8	700	1/8 x 1-3/4	11/16 x 2-1/2	.51	K025TPD	K025TPDW
4-1/8	2-1/4	2-1/2	8-1/4	6-3/4	1-7/8	1700	1/4 x 3	7/8 x 4	1.87	K045TPD	K045TPDW
Polyurethane Jaws, T-Handle. Ideal for holding polished or finished materials. Jaws are 65 to 75 on Shore Hardness D Scale. (70 D ± 5)											
3	1-1/4	1-3/4	6-3/4	5	1-1/8	1125	1/4 x 3	7/8 x 4	1	K030TU	K030TUW
4-1/2	2-1/4	3-13/16	8-1/4	7	1-1/8	1275	1/4 x 3	7/8 x 4	1.61	K045TUD	K045TUDW
6	4-1/2	5-1/2	11- 1/2	10	1-3/8	1500	5/16 x 3-3/4	1-1/8 x 5	3.58	K060TUD	K060TUDW



DEEP REACH CLAMPS IN HIGH VISIBILITY YELLOW



Easily see clamps in action or find them quickly. Helps prevent tools left in critical areas where foreign objects cannot be left behind. FOD (Foreign Object Debris) free.

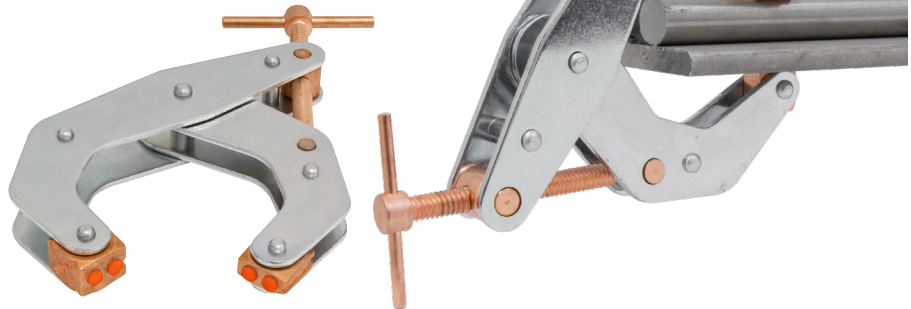


Jaw Capacity A (in)	Throat Depth Open B (in)	Throat Depth Closed C (in)	Overall Length D (in)	Width Open E (in)	Thickness F (in)	Max Clamp Force (lbs)	Handle Diameter & Length (in)	Handle Dia & Length w/Weaver-Grip™ (in)	Weight (lbs)	Model No.	Model No. With Weaver-Grip™
2-1/2	1-3/4	1-13/16	4-1/2	4-1/16	7/8	700	1/8 x 1 3/4	11/16 x 2-1/2	.51	K025TDHVV	K025TDHVVW
4-1/2	2-3/8	2-5/8	7-1/2	7	1-1/8	1700	1/4 x 3	7/8 x 4	1.75	K045TDHVV	K045TDHVVW
6	5	5	11-1/2	10	1-3/8	2000	5/16 x 3 3/4	1-1/8 x 5	3.75	K060TDHVV	K060TDHVVW

4-IN-1, "MULTIPLE-JAW" DEEP REACH CLAMPS



Each deep-reaching, Multiple-Jaw clamp offers four clamping options to accommodate the different surfaces of your work pieces: flat, pipe, angled or non-marring. Simply rotate the clamp's jaws to match the surface style of your part. The polyurethane grip option can be used on polished or painted metals, wood, plastic, aluminum, or any soft material.

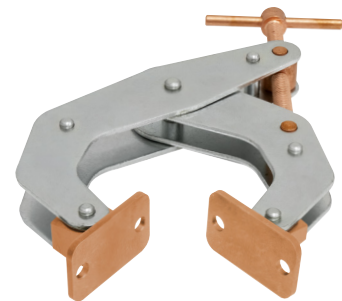
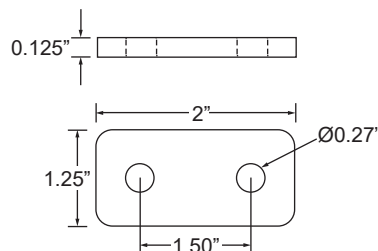


Jaw Capacity A (in)	Throat Depth Open B (in)	Throat Depth Closed C (in)	Overall Length D (in)	Width Open E (in)	Thickness F (in)	Max Clamp Force (lbs)	Handle Diameter & Length (in)	Handle Dia & Length w/Weaver-Grip™ (in)	Weight (lbs)	Model No.	Model No. With Weaver-Grip™
4-1/2	2-3/8	2-5/8	7-1/2	7	1-1/8	1700	1/4 x 3	7/8 x 4	1.75	K045TMD	K045TMDW
6	5	5	11-1/2	10	1-3/8	2000	5/16 x 3 3/4	1-1/8 x 5	3.75	K060TMD	K060TMDW

ADAPTABLE "WIDE FOOT JAW" DEEP REACH CLAMPS



Ideal for clamping material end-to-end or any clamping requirement needing a larger clamping surface. Feet contain mounting holes that adapt to special bracketry needed to hold your work piece, whether it is larger flat brackets or brackets designed to hold odd shaped parts.



Jaw Capacity A (in)	Throat Depth Open B (in)	Throat Depth Closed C (in)	Overall Length D (in)	Width Open E (in)	Thickness F (in)	Max Clamp Force (lbs)	Handle Diameter & Length (in)	Handle Dia & Length w/Weaver-Grip™ (in)	Weight (lbs)	Model No.	Model No. With Weaver-Grip™
4-1/4	2-3/8	2-5/8	8	7	1-1/4	1700	1/4 x 3	7/8 x 4	1.85	K045TFD	K045TFDW
5-3/4	5	5	12	10	1-1/4	2000	5/16 x 3 3/4	1-1/8 x 5	3.85	K060TFD	K060TFDW

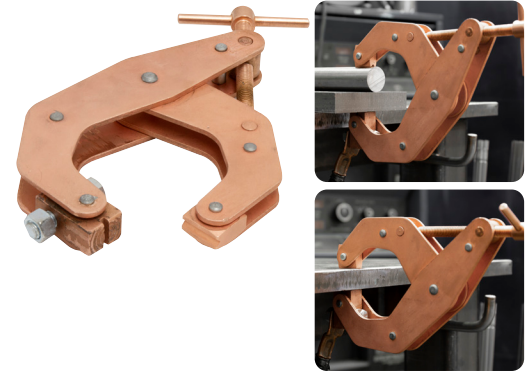
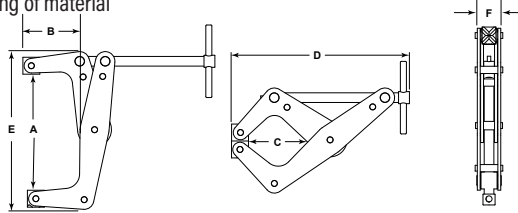


DEEP REACH WELDING GROUND CLAMP



FEATURES:

- Dual-purpose workpiece clamp and welding ground
- Contains a 400 AMP weld ground connection
- No-twist clamp secures workpiece without twisting or “walk-off-center”
- Copper plated clamp prevents weld spatter from sticking
- Clamp jaws are beveled to hold both flat or round surfaces
- Deep reach jaw allows for deep clamping of material
- USA M.A.D.E.™



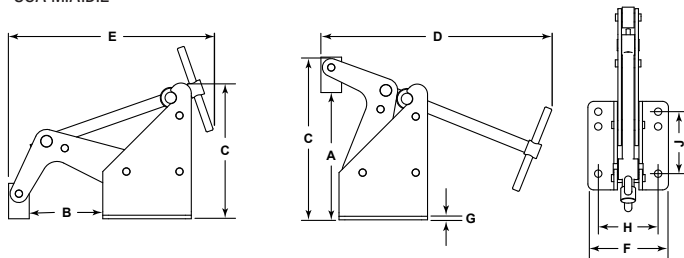
Jaw Capacity A (in)	Throat Depth Open B (in)	Throat Depth Closed C (in)	Overall Length D (in)	Width Open E (in)	Thickness F (in)	Max Clamp Force (lbs)	Handle Diameter & Length (in)	Handle Dia. & Length w/Weaver Grip (in)	Weight (lbs)	Model No.	Model No. w/ Weaver-Grip™
4-1/2	2-3/8	2-5/8	7-1/2	7	1-1/8	1700	1/4 x 3	7/8 x 4	1.91	K045TGD	K045TGDW

QUICK-ACTING HOLD DOWN CLAMPS ALSO WITH NO-MAR® PADS



FEATURES:

- Quick Acting Hold Down Clamp
- More clamping power than ordinary Toggle Clamps
- Ideal for Drill Presses and Machining Centers
- Best for holding where thickness and surface are not exact from part to part
- Spring tension jaw moves quickly out of the way
- USA M.A.D.E.™



Jaw Opening A (in)	Throat Depth Open B (in)	Throat Depth Closed C (in)	Height Open C (in)	Height Closed C (in)	Overall Length Open D (in)	Overall Length Closed E (in)	Flange Width F (in)	Flange Thick. G (in)	Bolt Hole Width H (in)	Bolt Hole Length J (in)	Max Clamp Force (lbs)	Handle Diameter & Length (in)	Handle Dia. & Length w/ Weaver-Grip™ (in)	Weight (lbs)	Model No.	Model No. w/ Weaver-Grip™
3	1-1/2	3-1/2	4	6	5-1/2	2-3/4	1/8	2	1-1/2	1500	1/4 x 3	7/8 x 4	1.15	K030TQ	K030TQW	
6	3	6	7	9	8-1/2	3-3/16	3/8	3	2-5/8	3200	5/16 x 3-3/4	1-1/8 x 5	3.7	K060TQ	K060TQW	
2-3/4	1-1/2	3-1/2	4	6	5-1/2	2-3/4	1/8	2	1-1/2	1500	1/4 x 3	7/8 x 4	1.15	K030TQP	K030TQPW	
5-3/4	3	6	7	9	8-1/2	3-3/16	3/8	3	2-5/8	3200	5/16 x 3-3/4	1-1/8 x 5	3.7	K060TQP	K060TQPW	

WEAVER-GRIPS™



FEATURES:

- Weaver-Grip™ - A High Quality Handle Accessory for Kant-Twist® T-Handle Clamps
- Comfortable Grip for ease of use
- Makes repetitive use much easier
- Apply maximum pressure with less effort
- Very durable high quality ABS plastic
- Taps easily On and Off
- USA M.A.D.E.™



Fits Clamps with Jaw Capacity (in)	Fits Clamps with T-Handle Length (in)	Diameter (in)	Length (in)	Weight (lbs)	Model No.
1	1	1/2	1-1/2	0.01	WG010
2	1-3/4	11/16	2-1/2	0.02	WG020
3 & 4-1/2	3	7/8	4	0.05	WG034
6	3-3/4	1-1/8	5	0.15	WG060