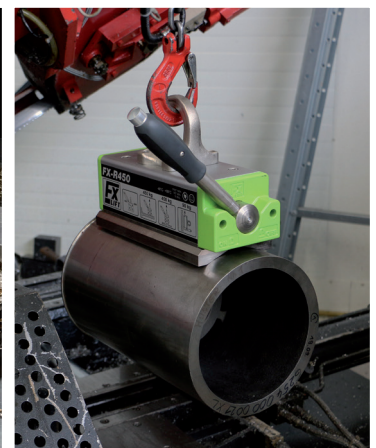
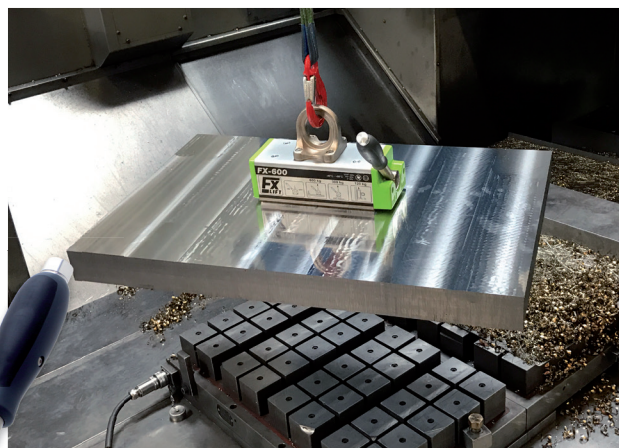
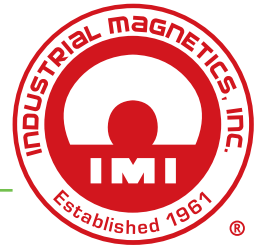


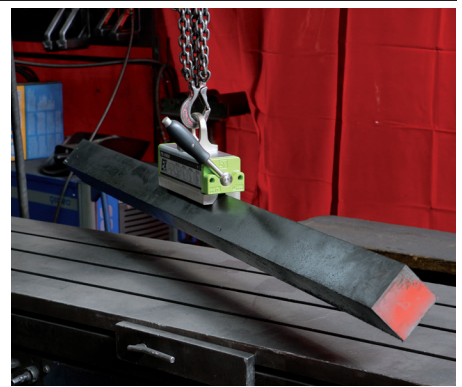


# ON/OFF Permanent Lifting Magnets Designed for Your Lifting Application



**FX Universal  
Flats & Rounds**

**FXR Mostly  
Rounds & Flats**



**FXP Thin Sheets  
& Pipe**

**FXV Beams, Angle Iron (90°)  
& Hot Parts**

## FX UNIVERSAL PERMANENT LIFTING MAGNETS for Flats and Round



The FX universal, On/Off permanent lift magnets are ideal for a variety of manufacturing applications where you're mostly lifting flat material, but occasionally need to lift rounds.

- On/off, Rare-Earth Permanent Magnet
- On/off handle only requires 90° rotation and locks at both on/off positions
- Durable, recessed metal name plates, not stickers
- Corrosion resistant, plated-magnet surface
- Heat resistant up to 180°F (82°C)
- 3:1 Design Factor
- 2018 ASME B30.20 BTH-1 Design Category B, Service Class 3



Model No.	WLL		Overall		Magnet			Handle	Bail			
	LBS	KG	Height (in)	Length (in)	Height (in)	Width (in)	Length (in)	Length (in)	Thickness (in)	Height (in)	Width (in)	Weight (lbs)
FX0330	330	150	4.9	6.3	2.3	2.5	4.75	5.3	0.4	1.6	1	8
FX0660	660	300	6.2	8	3	3.4	6.2	7.5	0.5	2	1.6	19
FX1320	1320	600	7.4	11.3	3.7	4.4	9.4	9	0.6	2.4	2	42
FX2200	2200	1000	9.4	14.2	4.7	6	12	10.2	0.8	3	2.3	93
FX4400	4400	2000	12.3	18.5	6.6	9	15.7	16.1	1	3.5	2.6	254
FX6600	6600	3000	12.3	25.5	6.6	9	22.7	21	1	3.5	2.6	366

Model No.	Working Load Limit (WLL) in lbs (kg) & *Max sheet Length Due To Sag For Material Thickness For Single Magnet Use							Round Lifting Applications			Vertical Part Flat
	1/4 (6')	3/8 (8')	1/2 (8')	3/4 (8')	1 (10')	2 (10')	3 (10')	WLL RD	Min/Max Dia	Min Thk	WLL
FX0330	142 (65)	330 (150)	330 (150)	330 (150)	330 (150)	330 (150)	330 (150)	165 (75)	2 - 8	5/16	66 (30)
FX0660	355 (152)	507 (230)	580 (263)	660 (300)	660 (300)	660 (300)	660 (300)	330 (150)	2 - 12	1/2	132 (60)
FX1320	331(150)	661 (300)	965 (438)	1320 (599)	1320 (599)	1320 (599)	1320 (599)	660 (300)	4 - 16	5/8	264 (120)
FX2200	NA	772 (350)	1160 (526)	1984 (900)	2200 (998)	2200 (998)	2200 (998)	1100 (500)	4 - 18	3/4	440 (200)
FX4400	NA	NA	965 (438)	2200 (998)	2646 (1200)	4400 (1996)	4400 (1996)	2200 (998)	6 - 24	1-1/2	NA
FX6600	NA	NA	NA	3850 (1746)	3968 (1800)	6600 (2994)	6600 (2994)	3300 (1497)	6 - 24	1-1/2	NA

## FXP PERMANENT LIFTING MAGNETS for Thin Sheets and Pipe



Ideal for thin sheets or parts, tanks/containers and thin-walled pipe that normally can't be lifted with a permanent, On/Off magnet. The magnetic field on the FXP is concentrated and shallow to drive the strength into thin material.

- On/off Rare Earth Permanent Magnet
- On/off handle only requires 90° rotation and locks at both on/off positions
- Recessed metal name plates, not stickers
- Corrosion resistant, plated-magnet surface
- Heat resistant up to 180°F (82°C)
- 3:1 Design Factor
- 2018 ASME B30.20 BTH-1 Design Category B, Service Class 3

Model No.	WLL		Overall		Magnet			Handle	Bail			
	LBS	KG	Height (in)	Length (in)	Height (in)	Width (in)	Length (in)	Length (in)	Thickness (in)	Height (in)	Width (in)	Weight (lbs)
FXP0375	375	170	5.3	7.7	2.7	2.5	6.8	5.3	0.4	1.6	1	12
FXP0725	725	330	6.7	10.4	3.5	3.4	9.4	7.5	0.5	2	1.6	28
FXP1450	1450	650	8	13.8	4.2	4.4	12.6	9	0.6	2.4	2	58

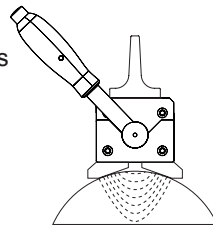
Model No.	Working Load Limit (WLL) in lbs (kg) & *Max sheet Length Due To Sag For Material Thickness For Single Magnet Use							Round Lifting Applications		
	9 ga (6')	3/16 (6')	1/4 (6')	3/8 (8')	1/2 (8')	3/4 (8')	1 (10')	WLL RD	Min/Max Dia	Min Thk
FXP0375	176 (80)	200 (91)	265 (120)	375 (170)	375 (170)	375 (170)	375 (170)	330 (150)	1 - 4	5/16
FXP0725	220 (100)	275 (125)	353 (160)	725 (329)	725 (329)	725 (329)	725 (329)	660 (300)	2 - 6.5	1/2
FXP1450	353 (160)	375 (170)	441 (200)	1060 (481)	1125 (510)	1450 (658)	1450 (658)	1210 (550)	3 - 9	5/8



## FXR PERMANENT LIFTING MAGNETS for Round Material

We recommend the FXR for when you're mostly lifting round/curved surfaces such as shafts, thick walled pipe, or billet, but occasionally need to lift flat material. Specially designed pole shoes provide a deep penetrating magnetic field and part stability.

- On/off, Rare-Earth Permanent Magnet
- On/off handle only requires 90° rotation and locks at both on/off positions
- Durable, recessed metal name plates, not stickers
- Corrosion resistant, plated-magnet surface
- Heat resistant up to 180°F (82°C)
- 3:1 Design Factor
- 2018 ASME B30.20 BTH-1 Design Category B, Service Class 3



Model No.	WLL		Overall		Magnet			Handle	Bail			
	LBS	KG	Height (in)	Length (in)	Height (in)	Width (in)	Length (in)	Length (in)	Thickness (in)	Height (in)	Width (in)	Weight (lbs)
FXR0220	220	100	5.2	6.3	2.7	2.7	5.4	5.3	0.4	1.6	1	9
FXR0500	500	225	6.7	8	3.5	3.8	7.2	7.5	0.5	2	1.6	21
FXR1000	1000	450	8.1	11.3	4.4	4.9	10.2	9	0.6	2.4	2	49
FXR1650	1650	750	10.3	14.2	5.6	6.7	13	10.2	0.8	3	2.3	108
FXR2650	2650	1200	13.1	18.5	7.5	9.7	18.2	16.1	1	3.5	2.6	280
FXR4000	4000	1800	13.1	25.5	7.5	9.7	24.1	21	1	3.5	2.6	402

Model No.	Working Load Limit (WLL) in lbs (kg) & *Max sheet Length Due To Sag For Material Thickness For Single Magnet Use							Round Lifting Applications		
	1/4 (6')	3/8 (8')	1/2 (8')	3/4 (8')	1 (10')	2 (10')	3 (10')	WLL RD	Min/Max Dia	Min Thk
FXR0220	154 (70)	220 (100)	220 (100)	220 (100)	220 (100)	220 (100)	220 (100)	220 (100)	1 - 6	5/16
FXR0500	310 (141)	500 (227)	500 (227)	500 (227)	500 (227)	500 (227)	500 (227)	500 (225)	2 - 8	3/8
FXR1000	331 (150)	661 (300)	780 (354)	1000 (454)	1000 (454)	1000 (454)	1000 (454)	1000 (450)	2 - 11	3/4
FXR1650	NA	882 (400)	1200 (544)	1650 (748)	1650 (748)	1650 (748)	1650 (748)	1650 (750)	3 - 15	3/4
FXR2650	NA	450 (204)	900 (408)	1764 (800)	2205 (1000)	2650 (1202)	2650 (1202)	2650 (1200)	5 - 22	1-1/2
FXR4000	NA	NA	1250 (567)	2646 (1200)	3307 (1500)	4000 (1814)	4000 (1814)	4000 (1800)	5 - 22	1-1/2

## FXV PERMANENT LIFTING MAGNETS for Beams, Angle Iron (90°) and Hot Parts

The FXV On/Off permanent lift magnets are ideal for handling 90° shapes like angle iron, square tubing, and hot parts. Also works extremely well for inside webbing of I-beams where you need higher handle rotation. The on/off handle only requires 90° rotation and locks at both on/off positions. Durable construction with recessed metal name plates and corrosion-resistant plated magnet surface. Features a 3:1 design factor and meets 2018 ASME B30.20 BTH-1 Design Category B, Service Class 3.

### Hot part Handling: contact time and cooling times

302°F (150°C) = 100%

392°F (200°C) = 50%, Max. 4 minutes contact, 4 minutes cooling time

482°F (250°C) = 33%, Max. 4 minutes contact, 8 minutes cooling time

(Note: WLL reduces as temperature raises)

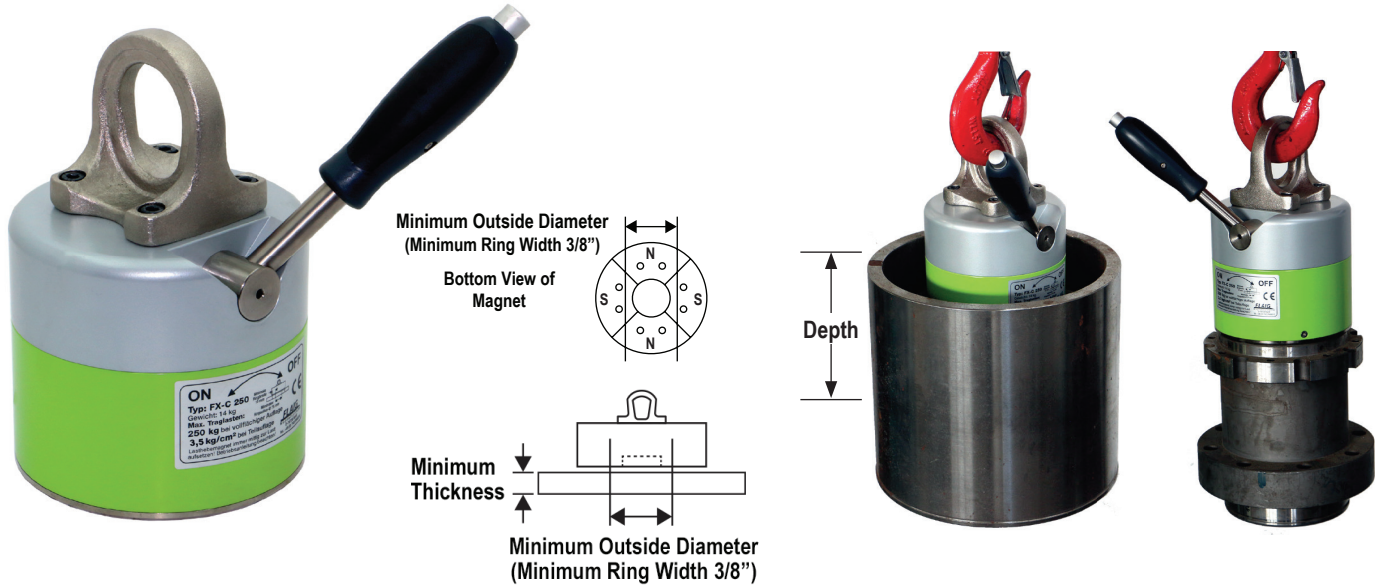


Model No.	WLL		Overall			Magnet		Handle	Bail			
	LBS	KG	Height (in)	Length (in)	Height (in)	Width (in)	Length (in)	Length (in)	Thickness (in)	Height (in)	Width (in)	Weight (lbs)
FXV0440	440	220	5.5	7.7	3	2.5	6.8	5.3	0.4	1.6	1	12
FXV0880	880	440	6.9	10.4	3.8	3.4	9.4	7.5	0.5	2	1.6	29
FXV1775	1775	800	8.3	13.5	4.5	4.4	12.6	9	0.6	2.4	2	62

Model No.	FLAT SURFACES					ANGLE IRON LEGS DOWN (Λ) ANGLE LEGS UP (V)										
	1/4 (6')	3/8 (8')	1/2 (8')	3/4 (8')	1 (10')	Model No.	1/4 (6')	1/4 (6')	3/8 (8')	3/8 (8')	1/2 (8')	1/2 (8')	3/4 (8')	3/4 (8')	1 (14')	1 (14')
FXV0440	270 (125)	415 (190)	440 (200)	440 (200)	440 (200)	FXV0440	260 (120)	100 (50)	260 (120)	175 (80)	260 (120)	220 (100)	260 (120)	220 (100)	260 (120)	220 (100)
FXV0880	440 (200)	695 (320)	810 (370)	880 (400)	880 (400)	FXV0880	440 (200)	270 (125)	495 (225)	275 (125)	550 (250)	385 (175)	550 (250)	440 (200)	550 (250)	440 (200)
FXV1775	440 (200)	935 (450)	1150 (550)	1775 (800)	1775 (800)	FXV1775	485 (220)	300 (140)	650 (300)	325 (150)	815 (375)	500 (230)	870 (400)	650 (300)	870 (400)	650 (300)

## FXC PERMANENT LIFTING MAGNETS for Flat, Circular Parts

The FXC lift magnets have a round, multi-pole magnetic field designed for lifting flat, circular-shaped parts such as rings, sleeves, bearing housings, flange plates and end of billet/pipe/shaft pieces. The on/off handle only requires 90° rotation and locks at both on/off positions. Durable construction with metal name plates and corrosion-resistant plated magnet surface. Features a 3:1 design factor and meets 2018 ASME B30.20 BTH-1 Design Category B, Service Class 3.

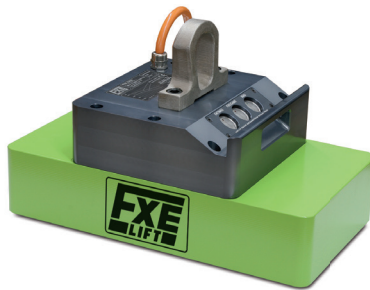


Model No.	WLL		Min Thk (in)	Min Dia (in)	Overall Height (in)	Overall Diameter (in)	Depth		Magnet		Handle		Bail		Weight (lbs)
	LBS	KG					Height (in)	Diameter (in)	Height (in)	Diameter (in)	Length (in)	Thickness (in)	Height (in)	Width (in)	
FXC0385	385	175	0.39	2.4	8.3	4.7	5	5.1	4.5	7.5	0.5	2	1.6	17	
FXC0550	550	250	0.47	3.3	9.5	6.3	5.8	5.7	6	7.5	0.6	2.4	2	33	
FXC0990	990	450	0.59	4.7	11.2	9.4	6.5	6.1	9.3	9	0.8	3	2.3	77	

## FXE PERMANENT LIFTING MAGNETS Electronically Controlled



**Smooth Surfaces,  
Cutting Tables**



**Flame Cut, Hot Rolled  
Ship Yards**



**Rough Surfaces, Casting,  
Forging, Slabs**



**INDUSTRIAL MAGNETICS, INC.**  
**Making Things Better®**

1385 S M 75 • Boyne City, MI 49712  
WWW.MAGNETICS.COM

Phone: 231.582.3100 • 800.662.4638

Mag-Mate®: 888.582.0822 • Automation: 888.582.0823

Made in Germany