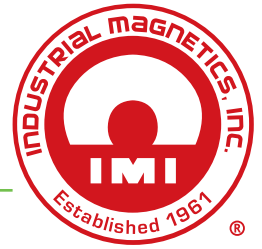




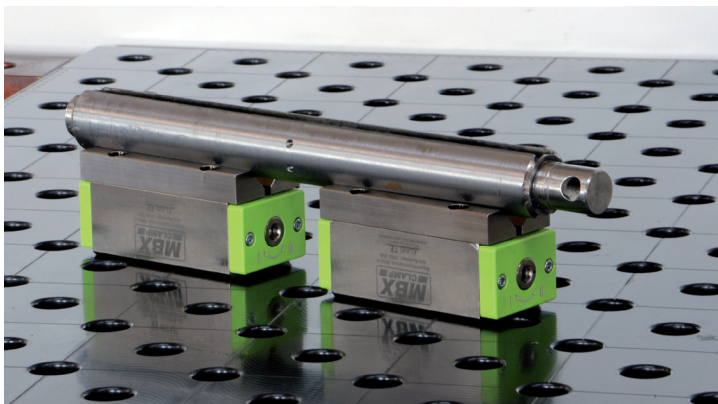
Magnetic Clamping Blocks



MBX magnetic clamping blocks have opposite clamping sides when turned ON. Designed to clamp workpieces to steel surfaces, such as machinery or worktables. Ideal for applications such as welding, deburring, tapping or machining operations. With two different shaped clamping surfaces, almost any workpiece geometry can be held such as: flat, round, square or custom profiles. Clamps allow machining on 5-sides, reducing the number of operations.

FEATURES

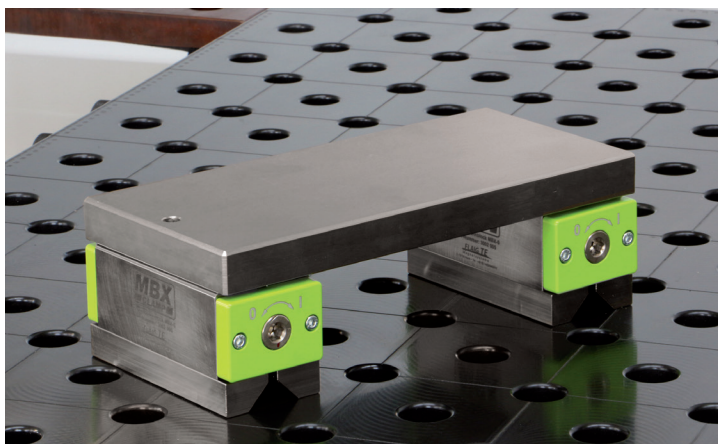
- Powerful ON/OFF Permanent 2-sided Magnet
- Holds Flats, Round, Square Workpiece Geometry
- 90° swing ON/OFF Activation
- Nickel-plated Housing
- 3rd Clamping Side for Vertical Holding
- Turns ON/OFF on Either End
- Use Hex Rod to Join Two Clamps (not included)
- Sold in Pairs



**Round Material -
Surface 1 & 2**



**Angle Material -
Surface 2**



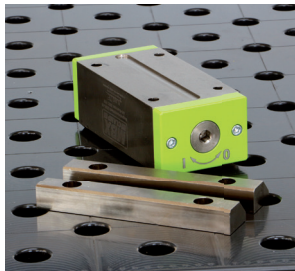
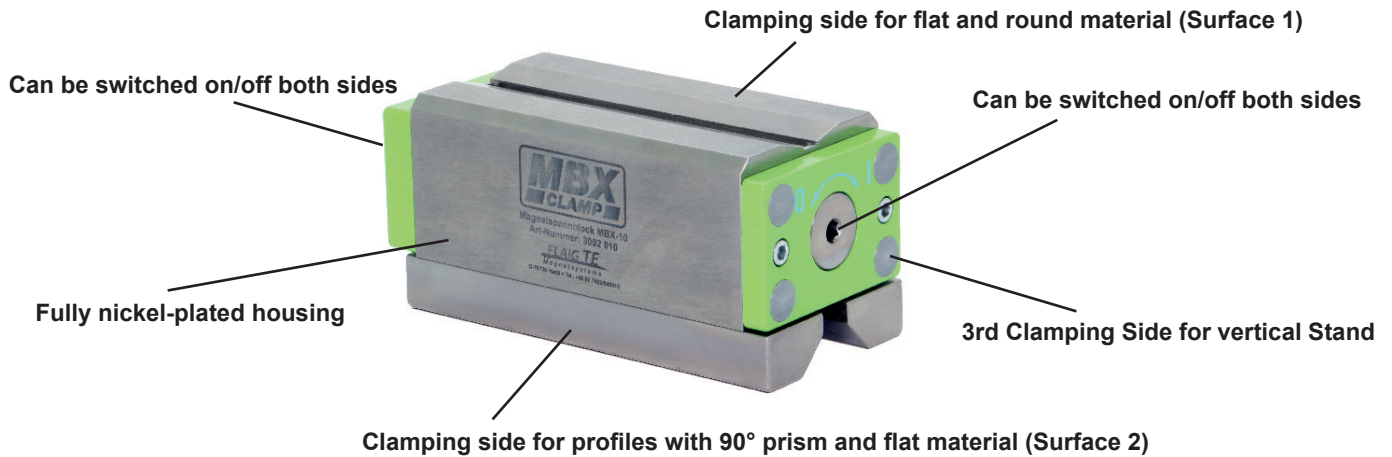
**Flat Material -
Surface 1**



**Vertical Drilling, Grinding, Welding
3rd side Hold**

Magnetic Clamping Blocks

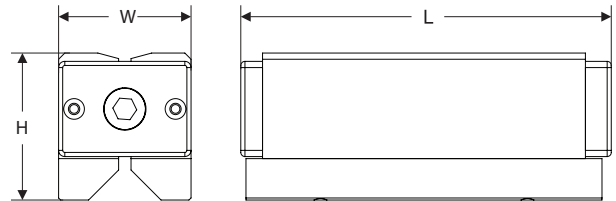
The MBX magnetic clamping block holds itself on the table and tension the workpiece



the 90° poles of the MBX can be replaced with workpiece-specific poles



Multiple MBX can be switched at the same time (Hex rod not included)



| Model No. | Overall Dimensions | | | Surface 1 Dimensions | | | Surface 2 Dim. w/ 90° | | | |
|-----------|--------------------|---------|---------|----------------------|---------|-----------|-----------------------|---------|-----------|-------------|
| | L | W | H | L | W | Dia. Min. | L | W | Dia. Min. | Weight (ea) |
| MBX05PK2 | 5.63" | 2.52" | 2.80" | 4.72" | 2.24" | 2" | 5.35" | 2.5" | 3/8" | 8.6 lbs |
| | 143 (mm) | 64 (mm) | 71 (mm) | 120 (mm) | 57 (mm) | 50 (mm) | 136 (mm) | 64 (mm) | 10 (mm) | 3.9 Kg |
| MBX07PK2 | 7.01" | 2.52" | 2.80" | 6.14" | 2.24" | 2" | 6.77" | 2.52" | 3/8" | 10.8 lbs |
| | 178 (mm) | 64 (mm) | 71 (mm) | 156 (mm) | 57 (mm) | 50 (mm) | 172 (mm) | 64 (mm) | 10 (mm) | 4.9 Kg |
| MBX10PK2 | 7.24" | 3.43" | 3.47" | 6.38" | 2.24" | 2" | 7.01" | 2.99" | 1" | 19.40 lbs |
| | 184 (mm) | 87 (mm) | 88 (mm) | 162 (mm) | 57 (mm) | 50 (mm) | 178 (mm) | 76 (mm) | 25 (mm) | 8.8 Kg |

| Model No. | Breakaway Pull Pounds from Work Holding Face | | | | | |
|-----------|--|--|--|--|--|---|
| | Force to Breakaway from one surface | Force to Breakaway from either Top Plate (1" plate) or Bottom Plate (3" plate) | Force to Breakaway from Base Plate with 1" Plate on Either Pole Face | Shear Force to Slide Plate on either Magnet Face | 1.5" O.D. Bar Pulled from V-Pole w/Magnet on 3" Base Plate | 1.5" O.D. Bar Pulled from Flat Pole w/Magnet on 3" Base Plate |
| MBX05PK2 | 1125 lbs (510 Kg) | 320 lbs (145 Kg) | 120 lbs (54 Kg) | 80 lbs (36 Kg) | 180 lbs (81 Kg) | 115 lbs (52 Kg) |
| MBX07PK2 | 1575 lbs (714 Kg) | 370 lbs (167 Kg) | 160 lbs (72 Kg) | 100 lbs (45 Kg) | 200 lbs (90 Kg) | 130 lbs (58 Kg) |
| MBX10PK2 | 2250 lbs (1021 Kg) | 600 lbs (272 Kg) | 200 lbs (90 Kg) | 190 lbs (86 Kg) | 310 lbs (140 Kg) | 280 lbs (127 Kg) |



INDUSTRIAL MAGNETICS, INC.
Making Things Better®

1385 S M 75 • Boyne City, MI 49712
 WWW.MAGNETICS.COM
 Phone: 231.582.3100 • 800.662.4638
 Mag-Mate®: 888.582.0822 • Automation: 888.582.0823

Made in Germany