

The Ultimate in Recovery™



JAVELIN® EDDY CURRENT SEPARATORS

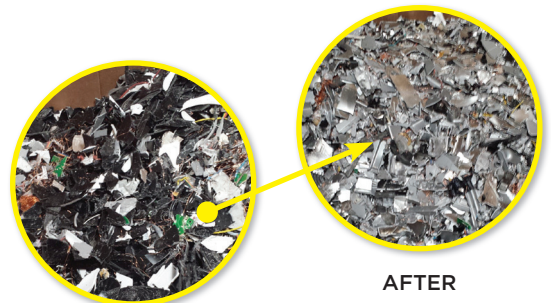
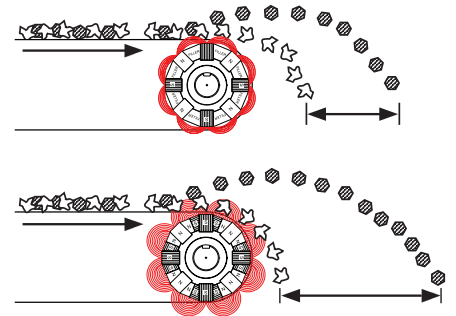
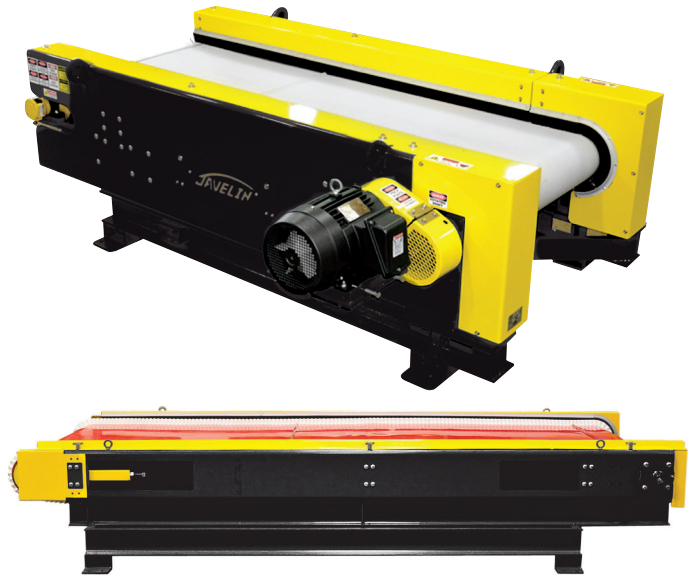
Javelin™ Eddy Current Separators are specifically engineered for your application to provide higher recovery rates at lower operating costs.

Built from the ground up to provide high recovery rates and low operating costs.

The Javelin™ ECS is the ultimate in recovery and is in use at major MRFs around the country and overseas with excellent results. Though we talk of 97% recovery most of our units have to pass more stringent compliance tests.

WE OFFER:

- Personalized control packages
- Vibratory feeders
- Units built to accommodate virtually any height requirement
- Total system design
- Custom options available
- Rotational speeds up to 3600 RPM



BEFORE

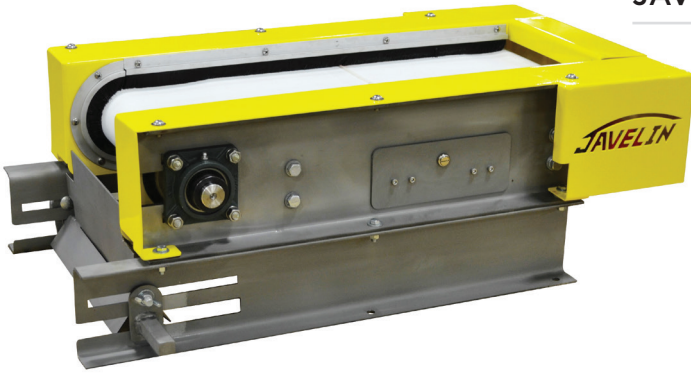
AFTER



javelin-mfg.com • 260.447.4959

Javelin Manufacturing is an Industrial Magnetics, Inc. company.

JAVELIN™ HG MAGNETIC CONVEYOR SYSTEMS



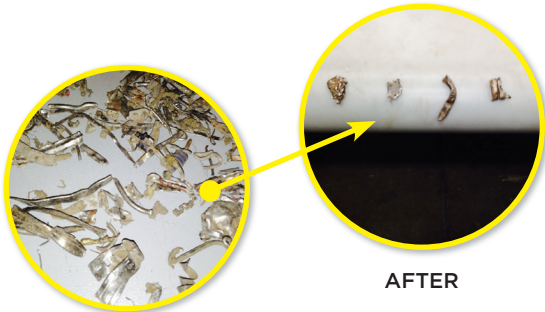
The High Gauss Holding Unit would be an excellent addition to your existing Javelin® Eddy Current separator or on its own to compliment your existing equipment.

Our holding magnet was developed to attract and hold stainless steel scrap found in electronic scrap, wire chopping lines and auto shredder residue.

The High Gauss holding magnet has a very strong field on the surface which will hold the stainless to the face.

Our units can be custom designed to fit your needs.

Javelin™'s High Gauss Unit eliminates the need for manual picking of smaller pieces of stainless out of the waste stream.



BEFORE

AFTER

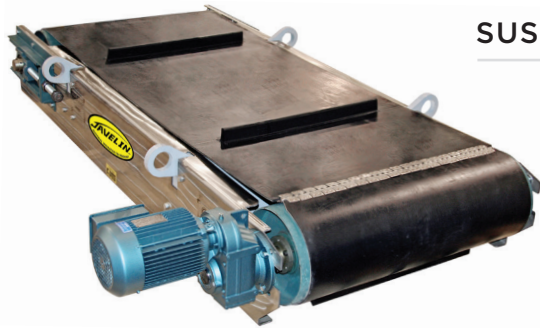
CUSTOM SOLUTIONS AND SPLITTER BOX OPTIONS



Javelin™ Splitter Boxes are a combination of an adjustable splitter vane and chute to capture the separated process material. Adjustable single and double vane models separate the materials by type and can be rotated into a position that will optimize your recovery.



SUSPENDED PERMANENT MAGNETIC SEPARATOR



SMS magnets (Suspended Magnetic Separator) are cross belt separator permanent magnets designed for separation of ferrous metal from a variety of over-the-belt conveyor applications. Proven in industries such as Mining, Aggregate, Recycling, Tire Shredding, Foundry, Wood Chip, Pulp & Paper, Power Generation, Construction and Demolition.

SMS Magnets offer optimum operating efficiency with a continuous cleaning belt to keep the magnet face free of collected metal. The powerful, deep reaching magnetic circuit pulls metal to the face of the magnet where the cleaned belt can remove the metal off the end of the magnet and out of the product flow. The compact design of the SMS makes it ideal for use on portable size reduction equipment



FEATURES:

- Unique magnetic circuit engineered for extended reach-out through heavy product burdens
- Low profile design is ideal for portable systems
- Uniform magnetic field across belt width for full coverage
- Extra-long field for extended magnetic exposure
- Continuous operation at peak magnetic efficiency
- Stainless steel housing and side guards
- Industrial welded construction
- Four rugged lift lugs for easy suspension
- Pick-up test data is available upon request
- Manual Clean Option available

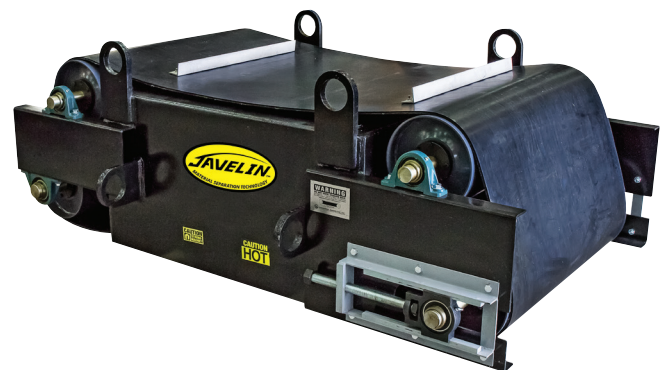
SUSPENDED ELECTROMAGNETIC SEPARATOR

Javelin® SEMO magnets (Suspended ElectroMagnet Overhead) are cross belt separator electromagnets designed for separation of ferrous metal from a variety of over-the-belt or cross belt conveyor applications. Proven in industries such as Mining, Aggregate, Recycling, Tire Shredding, Foundry, Wood Chip, Pulp & Paper, Power Generation, Construction and Demolition.

These electromagnets are design to deliver peak ferrous metal separation and capture performance. Our powerful and deep-reaching magnetic field is ideal for applications that have a deep product burden or require increased magnet suspension heights.

FEATURES:

- Turnbuckles
- Stainless steel clad belt
- Custom steel tube mounting frame
- Permanent plate magnet extension



MAGNETIC SEPARATION PULLEY

Industrial Magnetic's comprehensive line of powerful permanent Magnetic Separation Pulleys are typically installed as magnetic head pulleys in conveyor system applications to improve product purity and protect equipment from metal damage. They provide effective, automatic and continuous removal of ferrous metal from a material flow.

As the belt conveyed product travels over the magnetic head pulley, any ferrous metal that is mixed in with the product is attracted and held to the face of the belt and carried to the underside of the pulley. After the metal passes out of the magnetic field, it is released and discharges into a chute or bin for analysis, recovery, or disposal.

Commonly used in industries such as waste recovery, scrap yards, and E-scrap applications, magnetic separation pulleys are available in a wide variety of strengths and standard sizes to fit most belt configurations.

FEATURES:

- Separation Pulleys are available in a wide variety of standard sizes to fit most belt configurations with diameters ranging from 4" to 24".
- Separation Pulleys can be supplied with or without shafts.
- Separation Pulleys are available with various types and thicknesses of rubber lagging.
- Custom magnetic circuit designs to accommodate many applications. Ceramic, Rare Earth
- High Gauss options for stainless steel removal available



CUSTOM OPTIONS AVAILABLE

MAGNETIC DRUM SEPARATOR

Javelin™ Magnetic Drum Separators provide ferrous metal removal for the waste industry, C&D, MRF, MSW, scrap yards, and E-Scrap processing systems. Due to the nature of their design, magnetic drum separators are continuously self-cleaning units, and can be provided as the drum only, with support frame, or as a complete assembly with the housing and drive included offers:

FEATURES:

- Custom diameters and widths
- Stainless steel drum shaft
- Special magnetic circuits for reach or holding
- Stainless steel housings
- Housings available with special inlet for vibratory feeders
- Multiple drum assemblies
- Special voltage motors and drive packages
- Abrasion resistant surfaces

