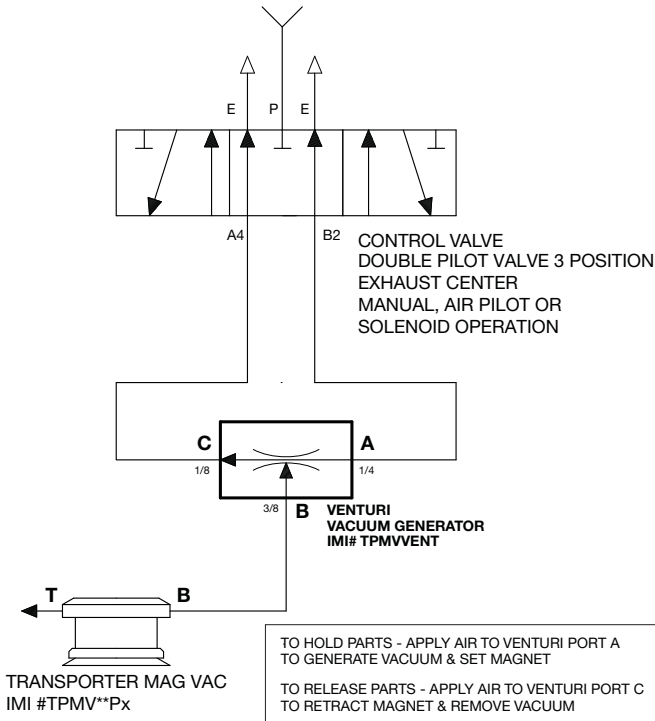


Transporter[®] MagVac Manual

AUTOMATION

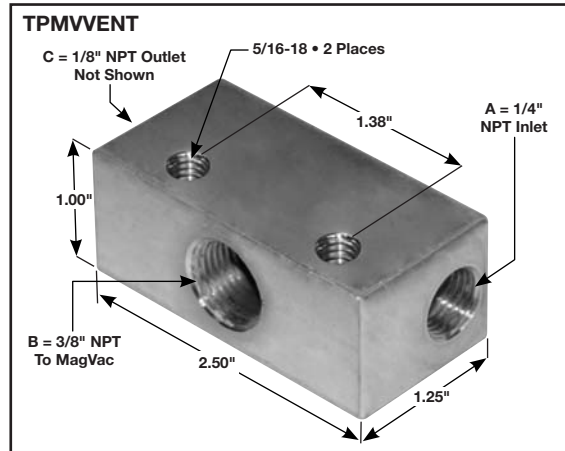
Connection Diagram For MagVac(s) To Venturi Vacuum Generator (TPMVVENT)

AIR INLET - CLEAN, DRY COMPRESSED AIR @60 PSI MAX.



Part No.	Min. Release Pressure	Mounting Thread	Port Thread	Weight	Max. Number Per TPMVVENT
TPMV15P4	44 psi	1/8" NPT	10-32	.17 lbs	6
TPMV15P2	58 psi	1/8" NPT	10-32	.22 lbs	6
TPMV275P6	44 psi	3/8" NPT	1/8" NPT	.70 lbs	6
TPMV275P4	44 psi	3/8" NPT	1/8" NPT	.79 lbs	4
TPMV275P2	58 psi	3/8" NPT	1/8" NPT	.84 lbs	4
TPMV4P4	58 psi	3/8" NPT	1/8" NPT	1.5 lbs	2

WARNING: The maximum operating pressure is 87 psi. Note: Grip time is 1.1 seconds or less at 80 PSI inlet pressure and tubing length of 4 feet between Magnets & Venturi. Release time from 12 gauge steel sheet for multiple magnets controlled by one Venturi is 0.2 seconds.



Rev. 05/10

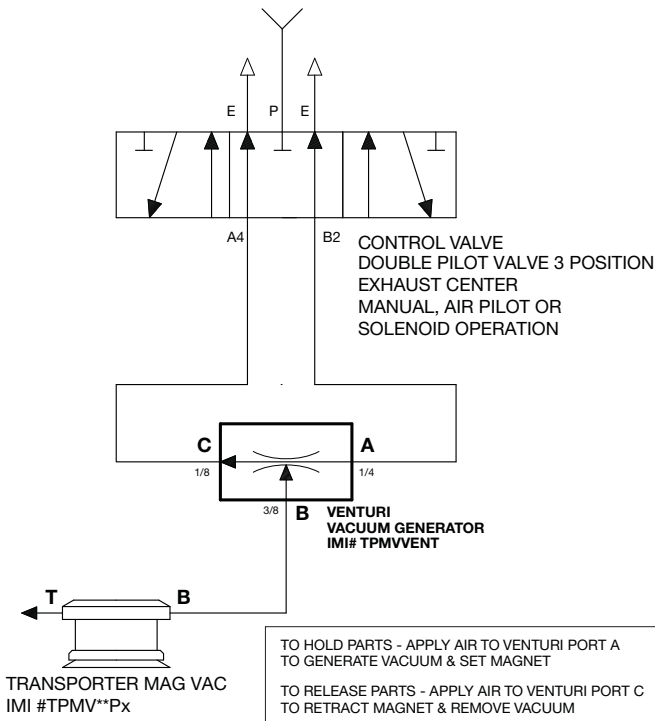
INDUSTRIAL MAGNETICS, INC. • 1385 South M 75 - Boyne City, MI 49712 • Phone: 888.582.0823 • FAX: 231.582.2704 • WWW.MAGNETICS.COM

Transporter[®] MagVac Manual

AUTOMATION

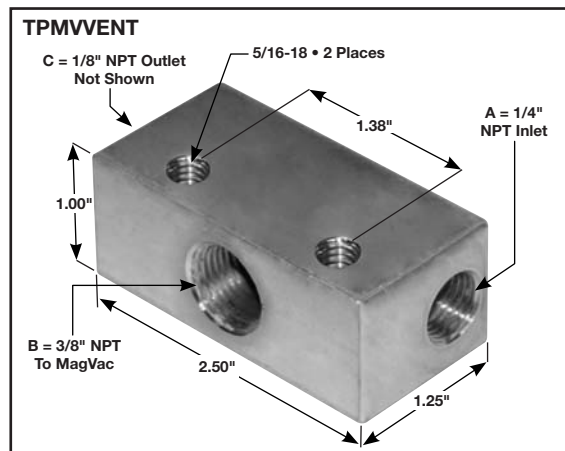
Connection Diagram For MagVac(s) To Venturi Vacuum Generator (TPMVVENT)

AIR INLET - CLEAN, DRY COMPRESSED AIR @60 PSI MAX.



Part No.	Min. Release Pressure	Mounting Thread	Port Thread	Weight	Max. Number Per TPMVVENT
TPMV15P4	44 psi	1/8" NPT	10-32	.17 lbs	6
TPMV15P2	58 psi	1/8" NPT	10-32	.22 lbs	6
TPMV275P6	44 psi	3/8" NPT	1/8" NPT	.70 lbs	6
TPMV275P4	44 psi	3/8" NPT	1/8" NPT	.79 lbs	4
TPMV275P2	58 psi	3/8" NPT	1/8" NPT	.84 lbs	4
TPMV4P4	58 psi	3/8" NPT	1/8" NPT	1.5 lbs	2

WARNING: The maximum operating pressure is 87 psi. Note: Grip time is 1.1 seconds or less at 80 PSI inlet pressure and tubing length of 4 feet between Magnets & Venturi. Release time from 12 gauge steel sheet for multiple magnets controlled by one Venturi is 0.2 seconds.



Rev. 05/10

INDUSTRIAL MAGNETICS, INC. • 1385 South M 75 - Boyne City, MI 49712 • Phone: 888.582.0823 • FAX: 231.582.2704 • WWW.MAGNETICS.COM