



**HIGH VOLUME SEPARATORS**

**Hump, Extractor and Split/Flow Application Sheet**

Customer \_\_\_\_\_ Quote No. \_\_\_\_\_ Ind. Code \_\_\_\_\_ Date \_\_\_\_\_

**1. Product: FIELDS HIGHLIGHTED IN RED ARE REQUIRED INFORMATION**

Description: \_\_\_\_\_ Volume/Flow Rate \_\_\_\_\_ Bulk Density \_\_\_\_\_  
Burden Depth in chute \_\_\_\_\_ Moisture % \_\_\_\_\_ Angle of Repose \_\_\_\_\_  
Abrasiveness: \_\_\_\_\_ Flow Quality: Great, Good, Poor \_\_\_\_\_  
Description of tramp metal to be removed (size/type): \_\_\_\_\_

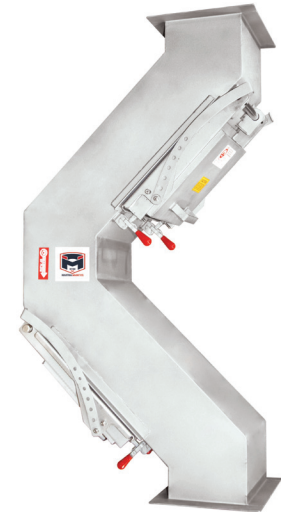
**2. Location Specifications: FIELDS HIGHLIGHTED IN RED ARE REQUIRED INFORMATION**

Product Feed to Magnet: Gravity Feed, Metered, Choke Fed or Other: \_\_\_\_\_  
Chute or Duct: Angle \_\_\_\_\_ and Length (L) \_\_\_\_\_ prior to Magnet  
Equipment above magnet \_\_\_\_\_ Flange (L x W or Diameter) \_\_\_\_\_ Thickness \_\_\_\_\_  
Equipment below magnet \_\_\_\_\_ Flange (L x W or Diameter) \_\_\_\_\_ Thickness \_\_\_\_\_  
Indoors \_\_\_\_\_ Outdoors \_\_\_\_\_ Ambient temp \_\_\_\_\_  
Vacuum \_\_\_\_\_ Pressure (psi) \_\_\_\_\_ Explosion Proof Yes \_\_\_\_\_ No \_\_\_\_\_  
Voltage: Class \_\_\_\_\_ Division \_\_\_\_\_ Group \_\_\_\_\_



**3. Specifications:**

Ceramic or Rare Earth \_\_\_\_\_ Construction: Stainless Steel \_\_\_\_\_  
**Finish:** Utility \_\_\_\_\_ Customary \_\_\_\_\_ Washdown \_\_\_\_\_  
Food (Class 1 or 2) \_\_\_\_\_ Sanitary (Class 1, 2 or 3) \_\_\_\_\_  
**Inlet Opening:** Width (W) \_\_\_\_\_ & Length (L) \_\_\_\_\_ or Diameter \_\_\_\_\_  
Angle of Chute or Duct Entering Magnet \_\_\_\_\_  
Flange (L x W or Diameter) \_\_\_\_\_ Thickness \_\_\_\_\_  
Pipe Flange Hole Pattern \_\_\_\_\_ Two Hole Pattern \_\_\_\_\_  
**Outlet Opening:** Width (W) \_\_\_\_\_ Length (L) \_\_\_\_\_ Diameter (If round) \_\_\_\_\_  
Angle of Chute or Duct Exiting Magnet \_\_\_\_\_  
Flange (L x W or Diameter) \_\_\_\_\_ Thickness \_\_\_\_\_  
Pipe Flange Hole Pattern \_\_\_\_\_ Two Hole Pattern \_\_\_\_\_  
**Cleaning Options:** Manual Clean \_\_\_\_\_ EZ-Clean \_\_\_\_\_ Self-Clean \_\_\_\_\_ (options below)  
Self-Clean Actuation Method Options: Air Cylinders \_\_\_\_\_ Hydraulic Cylinders \_\_\_\_\_ Electric Linear Actuators \_\_\_\_\_



**5. Budget and Time Frame**

A. Is this a funded project? Yes \_\_\_\_\_ No \_\_\_\_\_  
B. What is the Budget range for this High Volume Separator: \_\_\_\_\_  
C. What is the Time Frame for purchase and installation: \_\_\_\_\_

**6. Comments:**

**Internal Use** Type of magnet(s) recommended: \_\_\_\_\_ Qty: \_\_\_\_\_

Comments/Concerns: \_\_\_\_\_

**TOLL FREE 1.888.582.0821 imi@magnetics.com**

