



### GRAVITY (IN-STREAM)

## MAGNETIC DRAWER-IN-HOUSINGS

Our Drawer-In-Housing magnetic separators, also known as Drawer Magnets or Grate In Housings, consist of rows of round magnetic tubes that are assembled into drawers and are designed for ferrous metal separation in dry processing systems. The magnetic tubes of each row are aligned on alternating centers from the row directly above or below it. As product flows into the top of the housing, it is forced to cascade in a zig-zag pattern from row to row over the magnetic tubes. This ensures maximum tramp metal capture since the product comes in direct and repeated contact with a magnet as it travels through the housing.

As ferrous metal contaminants pass through the magnetic field, they are held to the tubes and separated from the product. The captured metal must be cleaned from the tubes on a regular basis to prevent buildup and subsequent wash-off back into the product flow.

### SimpleClean™ (MC) Manual Drawer-In-Housings:

The SimpleClean™ Manual Drawer-In-Housing is an economical solution for applications with low levels of tramp metal contamination. The flanged housing comes with two or more banks of magnetic grate tube assemblies on alternating centers. Each tube is designed with a non-magnetic area located outside of the product stream for substantially easier cleaning/removal of tramp metal than traditional "manual clean" models on the market.

### EZ-Clean (EZ) Drawer-In-Housings:

The EZ-Clean design speeds up and simplifies the cleaning process, making frequent cleaning requirements user-friendly. To clean the tubes, the operator pulls two handles on the front of the housing which slides the magnetic drawer out of the product flow. As the drawer is pulled out, the tubes pass through special seals which wipe off accumulated metal into a catch pan located under the wiper seal plate for proper disposal.

### Self-Cleaning (SC) Drawer-In-Housings:

IMI's Self-Cleaning Housings are ideal for remote magnet installation locations, applications requiring frequent cleaning and fully automated processing systems. The cleaning process is solenoid activated and can be controlled from a remote location with the flip of a switch. The cleaning cycle is completed in a matter of seconds. The air-actuated stripper seal assembly discharges collected tramp metal into a catch pan as the drawer opens.

### Continuous-Cleaning (CC) Drawer-In-Housings:

IMI's Continuous-Clean Housings are ideal for remote magnet installation locations, applications requiring frequent cleaning and fully automated processing systems. The patented design and cleaning process is continuous and does not require the product flow to be stopped. The cleaning cycle is completed in a matter of seconds. The air-actuated stripper seal assembly discharges collected tramp metal into a leak-proof enclosure with a discharge chute that ensures clean operation and isolation of possible hazardous materials.



SimpleClean™  
Drawer-In-Housing



EZ-Clean Drawer-In-Housing



Self-Cleaning Drawer-In-Housing



Continuous-Cleaning Drawer-In-Housing

### HACCP International Certified and USDA AMS Accepted Equipment.



Our **Sanitary Grade Drawer-In-Housing Magnets, with the Opti-H™ HACCP magnetic circuit**, are certified by HACCP International and fully conform to HACCP International's Food Safety Standard (0909MAGSEP 1-2010) for direct contact with food product.

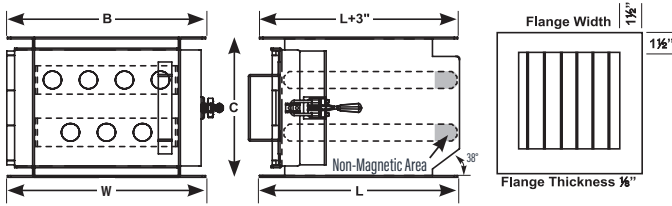


Our **Sanitary Grade Drawer-In-Housing Magnets** are USDA AMS accepted Dairy, Meat and Poultry magnetic separator processing equipment.

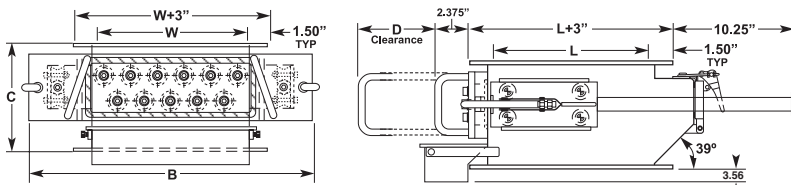
TOLL FREE **1.888.582.0821** [imi@magnetics.com](mailto:imi@magnetics.com)



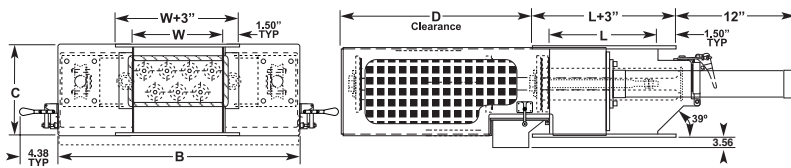
**Simple-Clean (MC) Dimensions:**



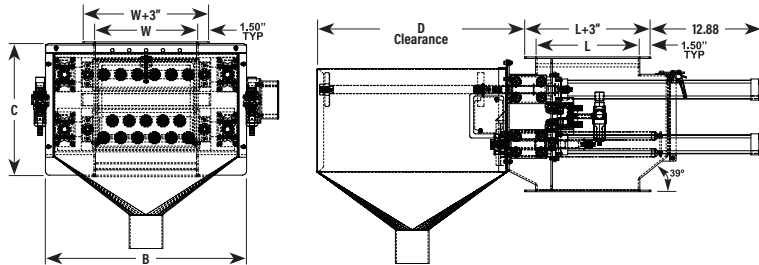
**EZ-Clean (EZ) Dimensions:**



**Self-Clean (SC) Dimensions:**



**Continuous-Clean (CC) Dimensions:**



**Drawer-In-Housing Standard Specifications**

BASE MODEL	OPENING (LxW)	TUBE ROWS	TUBE QTY.	B (WIDTH)			C (HEIGHT)			D (CLEARANCE)			WEIGHT (LBS.)			CAPACITY FT3/HR	FLOW CAPACITY BY BULK DENSITY (LBS./HR.)			
				MC	EZ	CC/SC	MC	EZ/SC	CC	MC	EZ/SC	CC	MC	EZ	SC		CC	40 LB/FT3	50 LB/FT3	60 LB/FT3
IMH0606_2	6 x 6	2	5	9	16	17.88	8	8	15	12	18.69	20	60	95	198	450	18,000	22,500	27,000	31,500
IMH0606_3	6 x 6	3	8	9	16	17.88	11	10	16	12	18.69	25	80	115	240	338	13,520	16,900	20,280	23,660
IMH0808_2	8 x 8	2	7	11	18	19.88	8	8	15	14	20.69	25	75	110	230	800	32,000	40,000	48,000	56,000
IMH0808_3	8 x 8	3	11	11	18	19.88	11	10	16	14	20.69	35	100	140	290	600	24,000	30,000	36,000	42,000
IMH1010_2	10 x 10	2	9	13	20	21.88	8	8	15	16	22.69	40	90	130	270	1,250	50,000	62,500	75,000	87,500
IMH1010_3	10 x 10	3	14	13	20	21.88	11	10	16	16	22.69	50	125	165	343	938	37,520	46,900	56,280	65,660
IMH1212_2	12 x 12	2	11	15	22	23.88	8	8	15	18	24.69	45	110	155	322	1,800	72,000	90,000	108,000	126,000
IMH1212_3	12 x 12	3	17	15	22	23.88	11	10	16	18	24.69	65	150	200	416	1,350	54,000	67,500	81,000	94,500
IMH1414_2	14 x 14	2	13	17	24	25.88	8	8	15	20	26.69	60	130	180	374	2,450	98,000	122,500	147,000	171,500
IMH1414_3	14 x 14	3	20	17	CF	25.88	11	12.5	16	CF	26.69	85	CF	CF	CF	1,838	73,520	91,900	110,280	128,660
IMH1616_2	16 x 16	2	15	19	26	27.88	8	8	15	22	28.69	75	150	205	426	3,200	128,000	160,000	192,000	224,000
IMH1616_3	16 x 16	3	23	19	CF	27.88	11	12.5	16	CF	28.69	105	CF	CF	CF	2,400	96,000	120,000	144,000	168,000
IMH1818_2	18 x 18	2	17	21	CF	29.88	8	8	15	24	30.69	90	CF	235	490	4,050	162,000	202,500	243,000	283,500
IMH2020_2	20 x 20	2	19	23	CF	31.88	8	8	15	26	32.69	110	CF	265	550	5,000	200,000	250,000	300,000	350,000
IMH2222_2	22 x 22	2	21	25	CF	33.88	8	8	15	28	34.69	130	CF	300	624	6,050	242,000	302,500	363,000	423,500
IMH2424_2	24 x 24	2	23	27	CF	35.88	8	8	15	30	36.69	150	CF	335	698	7,200	288,000	360,000	432,000	504,000

**Notes:** CF = Consult Factory and indicates a non-standard product. Capacities listed are based on dry, free-flowing products.

**FEATURES:**

- » 12 gauge or 3/16" welded stainless steel housing and flanges
- » Standard inlet/outlet from 6" to 24"
- » Ceramic or Rare Earth 1" diameter tubes on 2" vertical and horizontal centers
- » Multi-row magnet configurations with tubes on alternating centers of 2" from row to row
- » Leak resistant, Food Grade, Silicone gasket
- » Leak-Proof Guard with Discharge Chute (CC)
- » FDA white BUNA wiper seals (EZ, SC, CC)
- » Drawer and/or Guard Lock-Out
- » Hinged Rear Access Door with Lock-Out
- » Tool Free Guard Removal
- » Positive locking clamps for drawer (EZ)
- » Springs assists for seal plate positioning (EZ)
- » 80-100 psi minimum to operate (SC, CC)
- » Air cylinders, regulator, solenoid valve (SC)
- » All cylinders include magnetic pistons
- » Collection pan for metal (EZ, SC, CC)

**OPTIONS:**

- » Sanitary/Food Grade construction and finish
- » Wear resistant tube treatment and special wiper seals for abrasive products
- » Metal detectable, X-Ray inspectable gasket and wiper seals
- » Custom designed transitions
- » Custom tube spacing for special applications
- » Custom designs for unique applications
- » Multiple drawer configurations
- » Nema 9 solenoids (SC, CC)

