



GRAVITY (IN-STREAM)

THE OX® DRAWER-IN-HOUSING

For sticky product applications

Our Ox® Heavy Duty Drawer-In-Housing is designed to capture and remove fine ferrous tramp metal particles from vertical product flow and virtually eliminate sticking, galling, static buildup and corrosion on the tubes. The Housing incorporates design elements that are essential for optimum magnetic separation performance in a variety of difficult processing conditions such as: ambient temperature and humidity and material contents subject to bridging, abrasion, corrosion and galling.

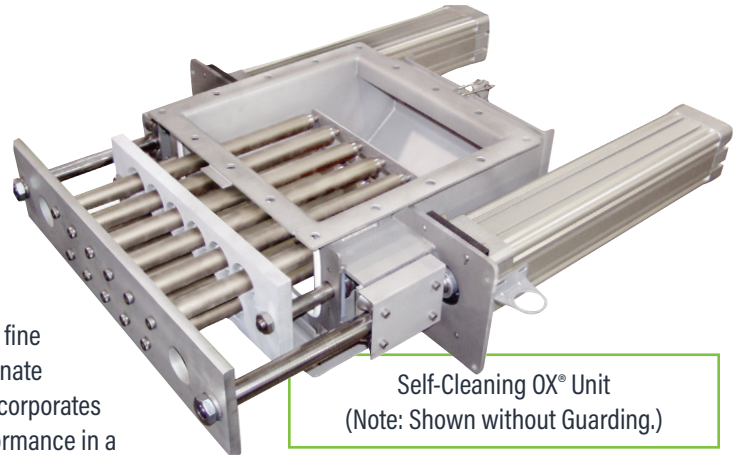
The main body of the housing consists of 2 to 3 rows of Nedox® coated round magnetic tubes and heavy duty Hydex® wiper seals that are assembled into drawers. Each row of magnetic tubes is aligned on alternating centers from the row directly above or below it.

As product flows into the top of the housing, it's forced to cascade in a zig-zag pattern from row to row over the magnetic tubes. This cascading effect ensures maximum tramp metal capture as the product comes in direct and repeated contact with the magnetic tubes.

As ferrous metal passes through the magnetic field, it is held to the tubes and separated from the product. The metal must be cleaned from the tubes on a regular basis to prevent buildup and subsequent wash-off back into the product flow.

Operation:

The Nedox® coating on the tubes prevents sticking problems associated with certain products and processing conditions. This allows the cleaning operation to function easier than if the tubes were caked with sticky or moist products. The heavy duty Hydex® wiper seals ensure that all collected metal and product residue is wiped free of the tubes without damaging the seals. The cleaning process for the Ox® can be automated with IMI's proven Self-Cleaning (SC) design or it can be accomplished manually with the EZ-Clean (EZ) design (see reverse side for details).



Self-Cleaning OX® Unit
(Note: Shown without Guarding.)

OPTIONS:

- » Custom Sizes and Transitions Available
- » Housing finish and welding surface treatments
- » Alternate Tube spacing for special applications
- » Alternate Gasket Material Available
- » Nema #9 solenoids (SC)
- » Alternate Stainless Steel Grades available
- » Multi-drawer options

Examples of the Drawer and the Rear Access Lock-outs



FEATURES:

- » Powerful 52 MGOe rare earth circuit
- » Hydex® heavy duty wear resistant wiper seals - ideal for removing sticky residue
- » Nedox® coated tubes - provides protection from abrasive materials and are self-lubricating to help prevent build-up and galling
- » Heavy duty compression spring assisted seal plate to ensure proper positioning
- » Welded T304 Stainless Steel construction
- » Food grade silicone gasket material - leak resistant operation
- » Removable collection pan for captured metal
- » Drawer and/or guard lock-out
- » Hinged rear access door with lock-out
- » Tool free guard removal
- » All cylinders include magnetic pistons

HACCP International Certified and USDA AMS Accepted Equipment.



Our **Sanitary Grade OX® Drawer-In-Housing Magnets, with the Opti-H™ HACCP magnetic circuit**, are certified by HACCP International and fully conform to HACCP International's Food Safety Standard (0909MAGSEP 1-2010) for direct contact with food product.

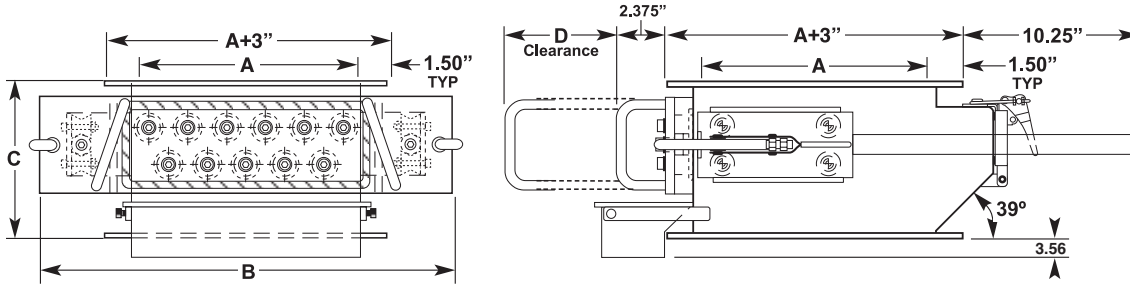


Our **Sanitary Grade OX® Drawer-In-Housing Magnets** are USDA AMS accepted Dairy, Meat and Poultry magnetic separator processing equipment.

TOLL FREE 1.888.582.0821 imi@magnetics.com



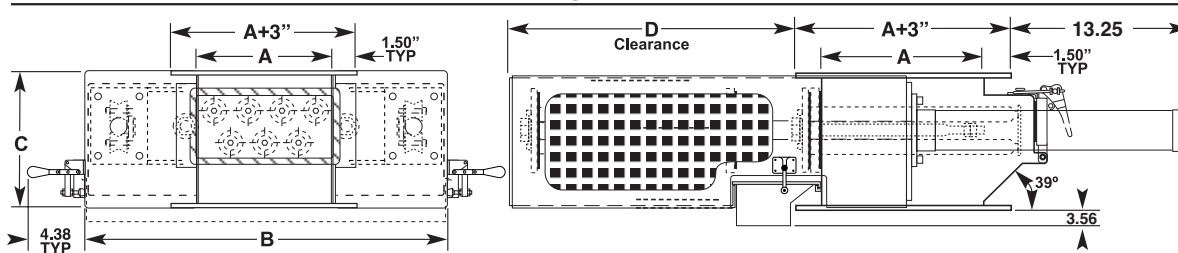
OX® EZ-Clean (EZ) Drawer-In-Housing Standard Specifications:



EZ-CLEAN MODEL	A	B	C	D	NO. OF TUBES	NO. OF BANKS	NO. OF DRAWERS	FT.3/ HR.	BULK DENSITY (LB./HR.)				APPROX. WT. (LBS.)
									40 LB./T3.	50 LB./FT3	60 LB./FT3	70 LB./FT3	
OXH0808R2EZ	8	18	8	13	7	2	1	800	32,000	40,000	48,000	56,000	114
OXH1010R2EZ	10	20	8	15	9	2	1	1,250	50,000	62,500	75,000	87,500	135
OXH1212R2EZ	12	22	8	17	11	2	1	1,800	72,000	90,000	108,000	126,000	157
OXH1414R2EZ	14	24	8	19	13	2	1	2,450	98,000	122,500	147,000	171,500	182
OXH1616R2EZ	16	26	8	21	15	2	1	3,200	128,000	160,000	192,000	224,000	209
OXH1818R2EZ	18	28	8	23	17	2	1	4,050	162,000	202,500	243,500	283,500	237

Note: All dimensions are stated in inches.

OX® Self-Clean (SC) Drawer-In-Housing Standard Specifications:



SELF-CLEAN MODEL	A	B	C	D	NO. OF TUBES	NO. OF BANKS	NO. OF DRAWERS	FT.3/ HR.	BULK DENSITY (LBS./FT.3)				APPROX. WT. (LBS.)
									40 LB./HR.	50 LB./HR.	60 LB./HR.	70 LB./HR.	
OXH0808R2SC	8	217/8	8	14	7	2	1	800	32,000	40,000	48,000	56,000	127
OXH1010R2SC	10	237/8	8	16	9	2	1	1,250	50,000	62,500	75,000	87,500	151
OXH1212R2SC	12	257/8	8	18	11	2	1	1,800	72,000	90,000	108,000	126,000	175
OXH1414R2SC	14	277/8	8	20	13	2	1	2,450	98,000	122,500	147,000	171,500	206
OXH1616R2SC	16	297/8	8	22	15	2	1	3,200	128,000	160,000	192,000	224,000	236
OXH1818R2SC	18	317/8	8	24	17	2	1	4,050	162,000	202,500	243,500	283,500	263
OXH2020R2SC	20	337/8	8	26	19	2	1	5,000	200,000	250,000	300,000	350,000	300
OXH2222R2SC	22	357/8	8	28	21	2	1	6,050	242,000	302,500	363,000	423,500	346
OXH2424R2SC	24	377/8	8	30	23	2	1	7,200	288,000	364,000	432,000	504,000	388

Note: All dimensions are stated in inches. Capacities listed above are based on properly fed dry (free flowing) bulk materials. Some materials may have higher or lower capacities.

