



GRAVITY (IN-STREAM)

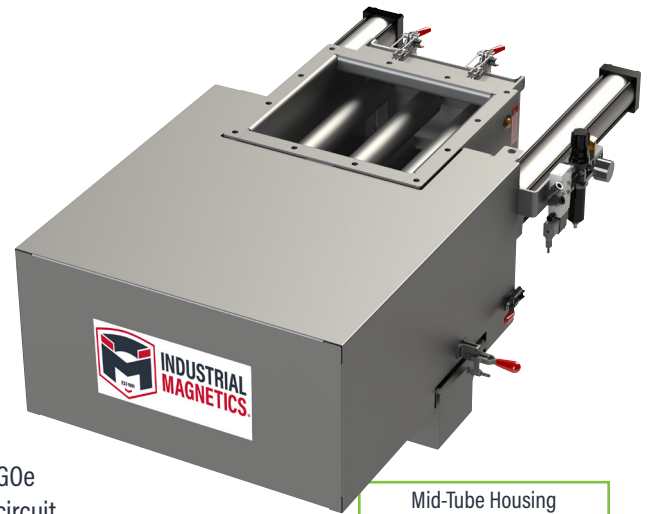
MTH™ DRAWER-IN-HOUSING

Optimum Separation for Difficult Flowing Products:

Our MTH™ (Mid-Tube Housing) incorporates 2 inch diameter Rare Earth tubes on 4 inch centers into our proven Drawer-In-Housing configuration for optimum ferrous metal separation for difficult flowing products in high-flow rate applications.

The spacing between the tubes is much larger than in a traditional housing with 1 inch diameter tubes, allowing for product to flow freely through the housing. The 52MGOe magnetic circuit achieves 28 lbs. of pull value on a 1/2" ball - the highest value of any circuit available on the market. Combined with a gauss averaging 13,000, our design offers the strongest and most effective solution to capture ferrous pieces, as well as smaller fines and weakly magnetic contaminants from a product flow.

As ferrous metal passes through the magnetic field, it is held to the tubes and separated from the product. The metal must be cleaned from the tubes on a regular basis to prevent buildup and subsequent wash-off into the product flow.



Mid-Tube Housing
(Self-Clean Model)

FEATURES:

- » Powerful 52 MGOe Rare Earth Circuit - Designed for optimum reach-out and surface holding strength
- » BUNA Wiper Seals - for removing collected metal
- » Compression Spring Assisted Seal Plate
- » Stainless Steel Construction
- » Food Grade Silicone Gasket Material - for leak resistant operation
- » Drawer and/or Guard Lock-Out
- » Hinged Rear Access Door with Lock-Out
- » Collection Pan for Captured Metal
- » Tool Free Guard Removal
- » Pneumatic cylinders for actuating self-cleaning
- » Self-Clean models' cylinders include magnetic pistons for optional Reed switching

OPTIONS:

- » Custom sizes, transitions, and collection pans
- » Housing finish and welding surface treatments (see tech sheet TG-PF)
- » Two row design with vertically offset tubes
- » Electric Actuators available on self-cleaning models
- » Hazardous location valve solenoids (self-cleaning model)
- » Other Stainless Steel Grades available
- » Hydex® Wiperseals, standard on self-cleaning models
- » Metal detectable, X-Ray inspectable gasket and wiper seals
- » Nedox® Coated Tubes - Protection from abrasive materials and is self-lubricating to help prevent build-up and galling
- » EZ-Clean to Self-cleaning upgrade kit available
- » Continuous-cleaning model available
- » Reed switching available

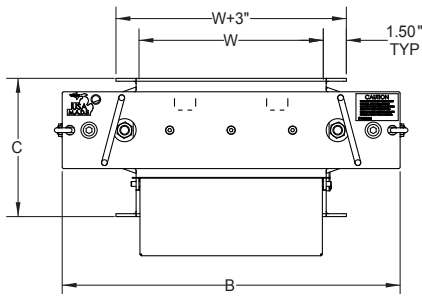
Examples of the
Drawer and the Rear
Access Lock-outs



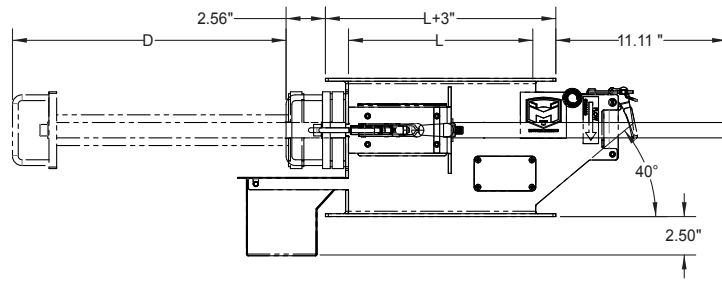
TOLL FREE 1.888.582.0821 imi@magnetics.com



MTH EZ-Clean (EZ) Drawer-In-Housing Standard Specifications:

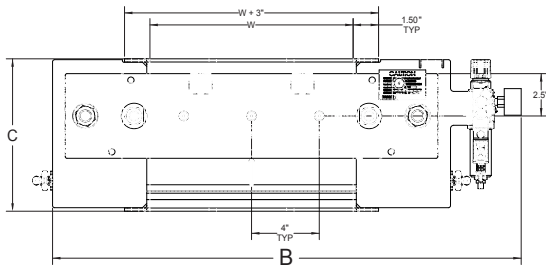


Front View

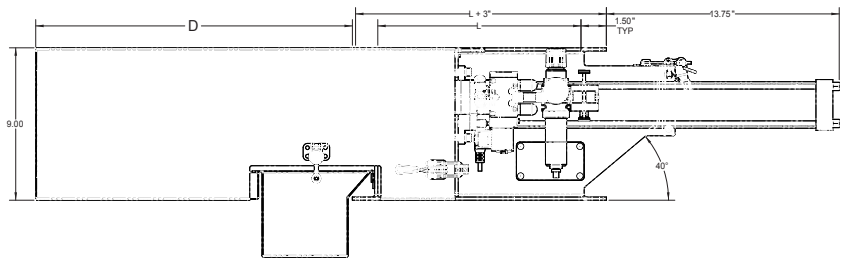


Side View

MTH Self-Clean (SC) Drawer-In-Housing Standard Specifications:



Front View



Side View

STANDARD MODEL	INLET I.D. (L X W)	B (WIDTH)		C (HEIGHT) EZ/SC	D (CLEARANCE)		TUBE QTY.	WEIGHT (LBS.)	
		EZ	SC		EZ	SC		EZ	SC
MTH1212R1 (EZ/SC)	12 x 12	22	27.75	9	17.8	18.7	3	124	185
MTH1414R1 (EZ/SC)	14 x 14	24	29.75	9	19.8	20.7	3	139	201
MTH1616R1 (EZ/SC)	16 x 16	26	31.75	9	21.8	22.7	4	168	239.3
MTH1818R1 (EZ/SC)	18 x 18	28	33.75	9	23.8	24.7	4	185	260

Note: All dimensions are stated in inches

