



PNEUMATIC LINE MAGNET

EXPOSED POLE TUBE MAGNET

Improve product purity while protecting processing equipment from metal damage.

Our Exposed Pole Tube magnet (EP Tube), is designed for use in pneumatic line systems. It can be used ahead of processing equipment and bulk load out to assure product purity and protect machinery from tramp metal damage. Ideal for use in dilute or dense phase systems, typical Exposed Pole Tube magnet applications include the processing of pelletized foods, feed or grain where degradation is a concern, fibrous products, or products that have a higher moisture content with a tendency to clog or congeal.

The open-flow design is ideal for use where product degradation is a concern. The EP Tube is available in either Ceramic or Rare Earth designs.

Ceramic versions, ideal for capturing large tramp metal such as nails, bolts or screws, have the magnetic portion built into the body of the housing. To clean, open the hinged door, reach into the housing and remove the collected metal.

Rare Earth versions, ideal for capturing fine particles of metal, are designed with the magnet mounted on a hinged door. To clean, un-clamp the door, swing it open and away from the product flow and remove the collected metal.



Exposed Pole Tube
(Rare Earth Model)

**HACCP International Certified and
USDA AMS Accepted Equipment.**



Our **Sanitary Grade Exposed Pole Tube Magnets** are certified by HACCP International and fully conform to HACCP International's Food Safety Standard (0909MAGSEP 1-2010) for direct contact with food product.



Our **Sanitary Grade Exposed Pole Tube Magnets** are USDA AMS accepted Dairy, Meat and Poultry magnetic separator processing equipment.

Example of the Door Lock-out



FEATURES:

- » Open flow design is ideal for use where product degradation is a concern
- » Ideal for use in dense phase systems operating at or below 15 psi
- » Provides product purity control and incoming product inspection for bulk loadout docks
- » Leak-resistant Food Grade Silicone gasket for flat to flat seal (factory tested to 15psi)
- » Lorenz® T-Handle clamps for a positive seal
- » Stainless steel housing for long, non-corrosive life
- » Grade 8 Ceramic or 52 MGOe Rare Earth Magnet Material
- » Door Lock-Out
- » Food grade finish

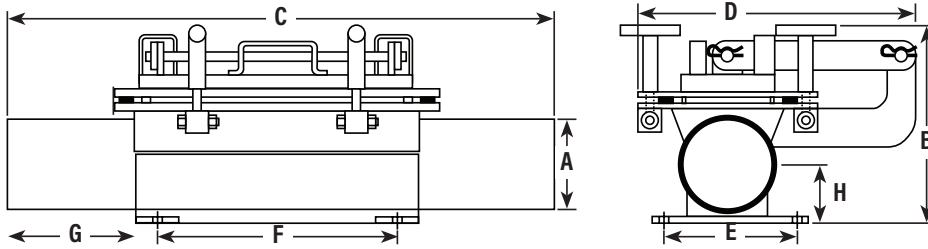
OPTIONS:

- » Standard pipe-size ends
- » Custom line sizes
- » ANSI or custom bolt pattern flanges available
- » ANSI spec flanges
- » Sanitary finish and welds
- » Couplings
- » Camlock fittings
- » Cart mounting for portable bulk unloading

TOLL FREE **1.888.582.0821** imi@magnetics.com



Exposed Pole Tube Magnet Standard Specifications:



Ceramic Magnet Models

MODEL	A (O.D.)	B	C	D	E	F	G	H	WEIGHT (LBS.)
EPT2000CFG	2	12	36	10	5	11.875	5.50	5	70
EPT3000CFG	3	14.50	36	10.50	6	11.875	5.50	7.0625	104
EPT4000CFG	4	14.50	36	10.50	6	11.875	5.50	7.0625	105
EPT5000CFG	5	16.50	39	12.50	8	11.875	7	8	137
EPT6000CFG	6	16.50	39	12.50	8	11.875	7	8	138
EPT8000CFG	8	20.25	50	14.50	10	11.875	7	8	335

Rare Earth Magnet Models

MODEL	A (O.D.)	B	C	D	E	F	G	H	WEIGHT (LBS.)
EPT2000RFG	2	7.25	36	9.75	6	11.875	5.50	1.875	64
EPT3000RFG	3	7.0625	36	9.75	6	11.875	9.875	1.875	67
EPT4000RFG	4	8.0625	36	10.50	6	11.875	9.875	2.375	83
EPT5000RFG	5	9.0625	36	11.50	8	11.875	9.875	2.875	91
EPT6000RFG	6	10.0625	36	12.50	8	11.875	9.875	3.375	10
EPT8000RFG	8	12.125	48	14.50	11	11.875	15.875	4.375	142

NOTE: All Dimensions Are Stated In Inches.

Vertical Mounting is recommended for Ceramic EP-Tubes

