



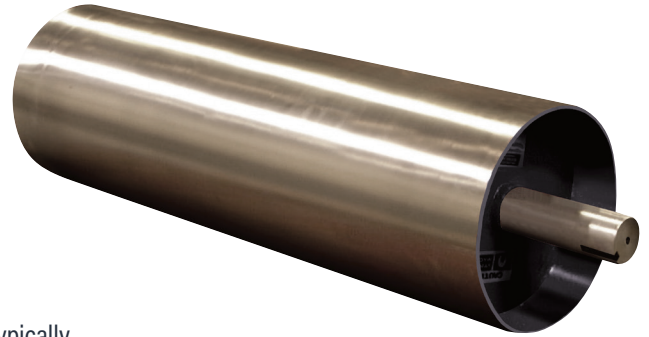
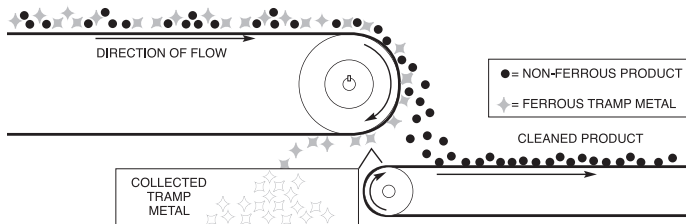
CONVEYOR LINE MAGNETS

MAGNETIC SEPARATION PULLEYS

Prevent Costly Damage & Reduce Product Liability

Our comprehensive line of powerful permanent Magnetic Separation Pulleys are typically installed as head pulleys in conveyor system applications. They provide effective, automatic and continuous removal of tramp metal from a material flow. Commonly used in industries such as waste recovery, mining and bulk material processing, IMI pulleys improve product purity and protect equipment from metal damage.

As the belt conveyed product travels over the magnetic head pulley, any ferrous metal that's mixed in with the product is attracted and held to the face of the belt and carried to the underside of the conveyor. After the metal passes out of the magnetic field, it is released and discharged into a chute or bin for disposal. The cleaned product, which is unaffected by the magnetic field, is discharged normally over the pulley away from the tramp metal.



Pulley with custom shaft and lagging

FEATURES:

- » Removable Steel Shaft
- » T304 Stainless Steel Shell
- » Powerful Permanent Magnet Circuit
- » Shaft locking devices for shaft diameters up to 3"
- » Straight hub with keyway and set screws for shaft diameters over 3"
- » Axial magnetic circuit design

OPTIONS:

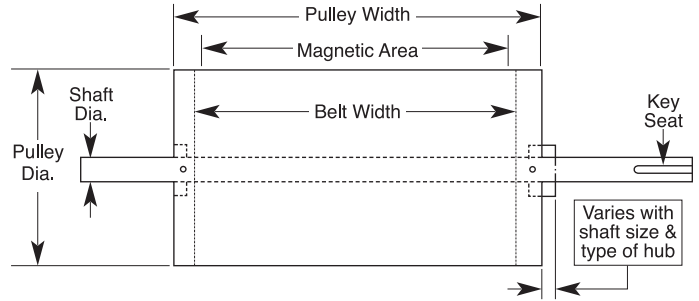
- » Crowned Face
- » T304 Stainless Steel Shaft
- » Lagging Available
- » Special diameters and lengths
- » Many hub styles available including Taperlock and QD styles
- » Radial magnetic circuit designs
- » Custom computer designed magnetic circuits for difficult applications
- » Pulley sizes available up to 60" in diameter and up to 96" wide

TOLL FREE **1.888.582.0821** imi@magnetics.com



Magnetic Separation Pulley Standard Specifications:

MODEL	PULLEY DIA.	PULLEY WIDTH	BELT WIDTH	MAGNET AREA	WEIGHT (LBS.)	SHAFT DIA.
PS0610	6.625	10	8	8	39	1.4375
PS0612	6.625	12	10	10	46	1.4375
PS0614	6.625	14	12	10	56	1.4375
PS0616	6.625	16	14	12	60	1.4375
PS0618	6.625	18	16	14	66	1.4375
PS0620	6.625	20	18	16	72	1.4375
PS0622	6.625	22	20	18	78	1.4375
PS0626	6.625	26	24	20	92	1.4375
PS0810	8.625	10	8	8	65	1.4375
PS0812	8.625	12	10	10	75	1.4375
PS0814	8.625	14	12	10	95	1.4375
PS0816	8.625	16	14	12	105	1.4375
PS0818	8.625	18	16	14	110	1.4375
PS0820	8.625	20	18	16	130	1.4375
PS0822	8.625	22	20	18	140	1.4375
PS0826	8.625	26	24	22	155	1.4375
PS1010	10	10	8	8	113	1.9375
PS1012	10	12	10	10	128	1.9375
PS1014	10	14	12	10	155	1.9375
PS1016	10	16	14	12	175	1.9375
PS1018	10	18	16	14	195	1.9375
PS1020	10	20	18	16	217	1.9375
PS1022	10	22	20	18	239	1.9375
PS1026	10	26	24	22	278	1.9375
PS1214	12	14	12	10	220	1.9375
PS1216	12	16	14	12	250	1.9375
PS1218	12	18	16	14	275	1.9375
PS1220	12	20	18	16	325	1.9375
PS1222	12	22	20	17	350	2.4375
PS1226	12	26	24	21	410	2.4375
PS1232	12	32	30	27	500	2.4375
PS1238	12	38	36	31	590	2.9375
PS1244	12	44	42	39	685	2.9375
PS1251	12	51	48	46	780	2.9375
PS1616	16	16	14	12	360	2.4375
PS1618	16	18	16	14	365	2.4375
PS1620	16	20	18	16	450	2.4375
PS1622	16	22	20	17	480	2.9375
PS1626	16	26	24	21	560	2.9375
PS1632	16	32	30	26	730	2.9375
PS1638	16	38	36	32	860	2.9375
PS1644	16	44	42	38	1,000	2.9375
PS1651	16	51	48	45	1,135	2.9375
PS1818	18	18	16	13	510	2.9375
PS1820	18	20	18	15	650	2.9375
PS1822	18	22	20	17	670	2.9375
PS1826	18	26	24	20	800	2.9375
PS1832	18	32	30	26	1,025	2.9375
PS1838	18	38	36	32	1,260	2.9375
PS1844	18	44	42	38	1,480	2.9375
PS1851	18	51	48	45	1,700	2.9375
PS2420	24	20	18	15	805	3.4375
PS2422	24	22	20	17	950	3.4375
PS2426	24	26	24	20	1,165	3.4375
PS2432	24	32	30	26	1,530	3.4375
PS2438	24	38	36	32	1,800	3.4375
PS2444	24	44	42	38	2,050	3.4375
PS2451	24	51	48	45	2,300	3.4375
PS2457	24	57	54	51	2,700	3.9375
PS2463	24	63	60	54	3,000	3.9375



NOTES:

All dimensions are stated in inches. The shaft sizes listed are nominal, however, due to variables in belt loading, every application must be evaluated by the factory before final sizes are determined. Pulleys can be supplied with or without shafts.

Pulleys are available in a wide variety of standard sizes to fit most belt configurations with diameters ranging from 6" to 24".